



Furniture

A new scale for 2024

Webinar – September 28, 2023

The speakers



Amélie Montoriol van Heesewijk

Furniture Sector Manager



Clémentine JANTON

**Bedding, Textile Decoration and
Accessories Market Manager**

Agenda

1

What's new?

2

Pricing scale
update

3

Our services to
support you



What's new ?

2024 scale: what's new?



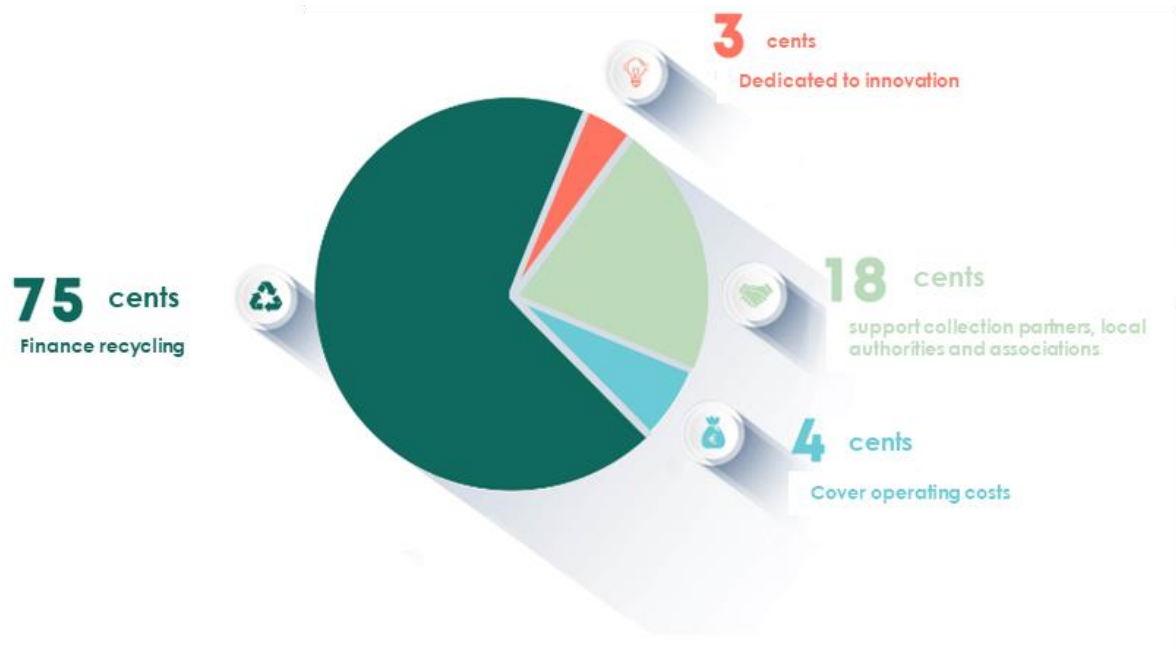
- Ecomaison has published its **new eco-participation scales to finance its activities and continue to develop the furniture sector**



- Updated scales also take into account **changes in products and materials**

- **No need to change** product coding

On average, for every €1 of eco-tax paid :





Presentation of the new price list update

No change in structure

- Conservation of the 4 product families :
 - Furniture and fittings
 - Bedding and accessories
 - With and without padding seating
 - Textile decoration
- Keep the same 11-digit product codes
- New eco-participation rates to be **applied and displayed** from **January 1, 2024**, and to be **collected** for the first **declaration** from **April 1 to 30, 2024**.

Furniture and fittings

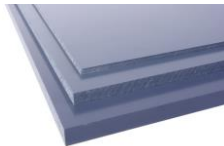
Adaptation of materials in the scale to take into account product recyclability



► **No change in codes** or wording for solid wood or wood-based panel furniture, but an **alignment of prices**



► Creation of a **new, more favorable pricing** on **mineral materials** (granite, stone)



► Taking into account the **different plastic resins** and creating a **dedicated pricing**, after recoding, for "single-resin" products (a more favorable pricing than the "**all-material pricing**").

The *furniture* scale in detail

The furniture scale in detail

	Metal	Wood			Inert material	Plastic	Other materials
	Metal > 50%	Solid wood > 75% ¹	Particleboard ² > 75%	All types of wood and wood derivatives, biosourced materials ³ > 50%	Inert mineral materials ⁴ > 90%	Single-resin plastic ⁵ > 90%	Unknown materials or assembly of 3 or more materials, with no primary material
< 0.5kg	0.03	0.03	0.03	0.04	0.04	0.05	0.06
≥ 0.5kg and < 1kg	0.06	0.06	0.06	0.11	0.11	0.13	0.17
≥ 1kg and < 2kg	0.12	0.12	0.12	0.18	0.18	0.25	0.29
≥ 2kg and < 5kg	0.22	0.22	0.22	0.37	0.37	0.50	0.58
≥ 5kg and < 10kg	0.55	0.55	0.55	0.83	0.83	1.08	1.17
≥ 10kg and < 20kg	1.25	1.25	1.25	1.75	1.75	1.92	2.33
≥ 20kg and < 30kg	1.83	1.83	1.83	2.92	2.92	3.17	3.83
≥ 30kg and < 40kg	2.62	2.62	2.62	4.00	4.00	4.42	5.25
≥ 40kg and < 60kg	3.50	3.50	3.50	5.33	5.33	6.33	8.34
≥ 60kg and < 100kg	5.83	5.83	5.83	8.33	8.33	10.00	12.50
≥ 100kg and < 150kg	10.50	10.50	10.50	15.00	15.00	16.67	20.83
≥ 150kg	17.50	17.50	17.50	25.00	25.00	25.00	29.17

The *furniture* scale in detail

No structural changes

Alignment of solid wood / panel prices > 75%.

	Metal	Wood			Inert material	Plastic	Other materials
	Metal > 50%	Solid wood > 75% ¹	Particleboard ² > 75%	All types of wood and wood derivatives, biosourced materials ³ > 50%	Inert mineral materials ⁴ > 90%	Single-resin plastic ⁵ > 90%	Unknown materials or assembly of 3 or more materials, with no primary material
< 0.5kg	0.03	0.03	0.03	0.04	0.04	0.05	0.06
≥ 0.5kg and < 1kg	0.06	0.06	0.06	0.11	0.11	0.13	0.17
≥ 1kg and < 2kg	0.12	0.12	0.12	0.18	0.18	0.25	0.29
≥ 2kg and < 5kg	0.22	0.22	0.22	0.37	0.37	0.50	0.58
≥ 5kg and < 10kg	0.55	0.55	0.55	0.83	0.83	1.08	1.17
≥ 10kg and < 20kg	1.25	1.25	1.25	1.75	1.75	1.92	2.33
≥ 20kg and < 30kg	1.83	1.83	1.83	2.92	2.92	3.17	3.83
≥ 30kg and < 40kg	2.62	2.62	2.62	4.00	4.00	4.42	5.25
≥ 40kg and < 60kg	3.50	3.50	3.50	5.33	5.33	6.33	8.34
≥ 60kg and < 100kg	5.83	5.83	5.83	8.33	8.33	10.00	12.50
≥ 100kg and < 150kg	10.50	10.50	10.50	15.00	15.00	16.67	20.83
≥ 150kg	17.50	17.50	17.50	25.00	25.00	25.00	29.17

The *furniture* scale in detail

Creation of a new
inert materials
pricing

	Metal	Wood			Inert material	Plastic	Other materials
	Metal > 50%	Solid wood > 75% ¹	Particleboard ² > 75%	All types of wood and wood derivatives, biosourced materials ³ > 50%	Inert mineral materials ⁴ > 90%	Single-resin plastic ⁵ > 90%	Unknown materials or assembly of 3 or more materials, with no primary material
< 0.5kg	0.03	0.03	0.03	0.04	0.04	0.05	0.06
≥ 0.5kg and < 1kg	0.06	0.06	0.06	0.11	0.11	0.13	0.17
≥ 1kg and < 2kg	0.12	0.12	0.12	0.18	0.18	0.25	0.29
≥ 2kg and < 5kg	0.22	0.22	0.22	0.37	0.37	0.50	0.58
≥ 5kg and < 10kg	0.55	0.55	0.55	0.83	0.83	1.08	1.17
≥ 10kg and < 20kg	1.25	1.25	1.25	1.75	1.75	1.92	2.33
≥ 20kg and < 30kg	1.83	1.83	1.83	2.92	2.92	3.17	3.83
≥ 30kg and < 40kg	2.62	2.62	2.62	4.00	4.00	4.42	5.25
≥ 40kg and < 60kg	3.50	3.50	3.50	5.33	5.33	6.33	8.34
≥ 60kg and < 100kg	5.83	5.83	5.83	8.33	8.33	10.00	12.50
≥ 100kg and < 150kg	10.50	10.50	10.50	15.00	15.00	16.67	20.83
≥ 150kg	17.50	17.50	17.50	25.00	25.00	25.00	29.17

The *furniture* scale in detail

A new price list for single-resin plastic products

	Metal	Wood			Inert material	Plastic	Other materials
	Metal > 50%	Solid wood > 75% ¹	Particleboard ² > 75%	All types of wood and wood derivatives, biosourced materials ³ > 50%	Inert mineral materials ⁴ > 90%	Single-resin plastic ⁵ > 90%	Unknown materials or assembly of 3 or more materials, with no primary material
< 0.5kg	0.03	0.03	0.03	0.04	0.04	0.05	0.06
≥ 0.5kg and < 1kg	0.06	0.06	0.06	0.11	0.11	0.13	0.17
≥ 1kg and < 2kg	0.12	0.12	0.12	0.18	0.18	0.25	0.29
≥ 2kg and < 5kg	0.22	0.22	0.22	0.37	0.37	0.50	0.58
≥ 5kg and < 10kg	0.55	0.55	0.55	0.83	0.83	1.08	1.17
≥ 10kg and < 20kg	1.25	1.25	1.25	1.75	1.75	1.92	2.33
≥ 20kg and < 30kg	1.83	1.83	1.83	2.92	2.92	3.17	3.83
≥ 30kg and < 40kg	2.62	2.62	2.62	4.00	4.00	4.42	5.25
≥ 40kg and < 60kg	3.50	3.50	3.50	5.33	5.33	6.33	8.34
≥ 60kg and < 100kg	5.83	5.83	5.83	8.33	8.33	10.00	12.50
≥ 100kg and < 150kg	10.50	10.50	10.50	15.00	15.00	16.67	20.83
≥ 150kg	17.50	17.50	17.50	25.00	25.00	25.00	29.17

The *furniture* scale in detail

The "other materials" rate for materials not listed before, no known and for assemblies

	Metal	Wood			Inert material	Plastic	Other materials
	Metal > 50%	Solid wood > 75% ¹	Particleboard ² > 75%	All types of wood and wood derivatives, biosourced materials ³ > 50%	Inert mineral materials ⁴ > 90%	Single-resin plastic ⁵ > 90%	Unknown materials or assembly of 3 or more materials, with no primary material
< 0.5kg	0.03	0.03	0.03	0.04	0.04	0.05	0.06
≥ 0.5kg and < 1kg	0.06	0.06	0.06	0.11	0.11	0.13	0.17
≥ 1kg and < 2kg	0.12	0.12	0.12	0.18	0.18	0.25	0.29
≥ 2kg and < 5kg	0.22	0.22	0.22	0.37	0.37	0.50	0.58
≥ 5kg and < 10kg	0.55	0.55	0.55	0.83	0.83	1.08	1.17
≥ 10kg and < 20kg	1.25	1.25	1.25	1.75	1.75	1.92	2.33
≥ 20kg and < 30kg	1.83	1.83	1.83	2.92	2.92	3.17	3.83
≥ 30kg and < 40kg	2.62	2.62	2.62	4.00	4.00	4.42	5.25
≥ 40kg and < 60kg	3.50	3.50	3.50	5.33	5.33	6.33	8.34
≥ 60kg and < 100kg	5.83	5.83	5.83	8.33	8.33	10.00	12.50
≥ 100kg and < 150kg	10.50	10.50	10.50	15.00	15.00	16.67	20.83
≥ 150kg	17.50	17.50	17.50	25.00	25.00	25.00	29.17

The *furniture* scale overview

	Metal	Wood			Inert material	Plastic	Other materials
	Metal > 50%	Solid wood > 75% ¹	Particleboard ² > 75%	All types of wood and wood derivatives, biosourced materials ¹ > 50%	Inert mineral materials ³ > 90%	Single-resin plastic ⁴ > 90%	Unknown materials or assembly of 3 or more materials, with no primary material
< 0.5kg	0.03	0.03	0.03	0.04	0.04	0.05	0.06
≥ 0.5kg and < 1kg	0.06	0.06	0.06	0.11	0.11	0.13	0.17
≥ 1kg and < 2kg	0.12	0.12	0.12	0.18	0.18	0.25	0.29
≥ 2kg and < 5kg	0.22	0.22	0.22	0.37	0.37	0.50	0.58
≥ 5kg and < 10kg	0.55	0.55	0.55	0.83	0.83	1.08	1.17
≥ 10kg and < 20kg	1.25	1.25	1.25	1.75	1.75	1.92	2.33
≥ 20kg and < 30kg	1.83	1.83	1.83	2.92	2.92	3.17	3.83
≥ 30kg and < 40kg	2.62	2.62	2.62	4.00	4.00	4.42	5.25
≥ 40kg and < 60kg	3.50	3.50	3.50	5.33	5.33	6.33	8.34
≥ 60kg and < 100kg	5.83	5.83	5.83	8.33	8.33	10.00	12.50
≥ 100kg and < 150kg	10.50	10.50	10.50	15.00	15.00	16.67	20.83
≥ 150kg	17.50	17.50	17.50	25.00	25.00	25.00	29.17



Bedding and accessories

The *bedding* scale in detail

The scale structure for mattresses is preserved

Creation of new size codes (160 and 180) to better understand the market (*but same price level as >141cm*)

Mattresses and mattress overlays

	< 120cm	121 to 140cm	> 141cm
Thickness ≤ 10cm	1.67	3.75	6.25
Thickness > 10cm	4.58	9.17	12.50
Inflatable, regardless of thickness	0.80	1.30	1.70

The *bedding* scale in detail

Slatted frame price list

Only applicable to metal and wood frame + slat structures

Slatted frames

		< 120cm	121 to 140cm	> 141cm
Slatted frames	Without padding	1.67	2.08	2.92

A slatted frame must not be padded or made from materials other than wood and metal. Otherwise, it is considered as a bed base.

Bed bases

No change in bed base codes, but 2 price levels (instead of 3)

Clarification: price with or without padding

		< 120cm	121 to 140cm	> 141cm
Bed base	Without padding	2.50	3.33	5.42
	With padding or fabric covering	3.33	5.41	7.08
Mechanical bed base, storage bed, or drawer bed	Without padding	6.25	7.50	9.17
	With padding or fabric covering	7.50	10.00	11.25

The *bedding* scale in detail

New: headboards are assigned to the bedding scale (and no longer to the furniture scale) and must be recoded, with a price per dimension.

Headboards

		< 120cm	121 to 140cm	> 141cm
Headboard	Without padding	0.83	1.67	2.08
	With padding or fabric covering	1.67	2.08	2.50

Non-litter mattress toppers clarified to take dimension into account (no code change)

Small padded items

Duvet / Quilt		Non-bedding mattress overlay*		Sleeping bag	Pillow / Bolster / Cushion	
W ≤ 205cm	W > 205cm	≤ 120cm	> 120cm	Single	Unit	Set of 2
0.33	0.50	0.33	0.50	0.50	0.17	0.33

*A non-bedding mattress overlay consists solely of a textile envelope and a filling of natural or synthetic fibres, feathers, or down.

The *bedding* scale in detail

Slats included in
bedding accessories

Hardware coding of
other accessories

Bedding accessories

	Unit	Set of 2	Set of 4
Bed legs / Slats	0.13	0.25	0.50

Rates for bedding accessories concern the following products: bed legs, slats, slat caps, etc. Other accessories apply the hardware scale,

The *bedding* scale overview

Duo mattresses: Duo mattresses should be coded as mattresses over 141cm.

Slatted frames: only wooden and metal slatted frames are concerned here. All other products will be considered as box springs.

For products sold **in packs** (e.g. bed base + headboard), the eco-tax to be applied is the **sum of the eco-taxes for each product***.

Mattresses and mattress overlays

	< 120cm	121 to 140cm	> 141cm
Thickness ≤ 10cm	1.67	3.75	6.25
Thickness > 10cm	4.58	9.17	12.50
Inflatable, regardless of thickness	0.80	1.30	1.70

Slatted frames

		< 120cm	121 to 140cm	> 141cm
Slatted frames	Without padding	1.67	2.08	2.92

A slatted frame must not be padded or made from materials other than wood and metal. Otherwise, it is considered as a bed base.

Bed bases

		< 120cm	121 to 140cm	> 141cm
Bed base	Without padding	2.50	3.33	5.42
	With padding or fabric covering	3.33	5.41	7.08
Mechanical bed base, storage bed, or drawer bed	Without padding	6.25	7.50	9.17
	With padding or fabric covering	7.50	10.00	11.25



With and without padding seats

The *seats* scale in detail

Applicable to all seats and seating products,
including accessories and seat components

No change in
weight ranges

	Without padding					With padding	Inflatable
	Metal > 50%	Solid wood > 75%	All types of wood and wood derivatives, biosourced materials ³ > 50%	Single-resin plastic ² > 90%	Unknown materials or assembly of 3 or more materials, with no primary material		
< 0.5kg	0.03	0.03	0.04	0.05	0.05	0.08	0.08
≥ 0.5kg and < 1kg	0.06	0.06	0.08	0.10	0.10	0.19	0.19
≥ 1kg and < 2kg	0.12	0.12	0.17	0.20	0.20	0.38	0.38
≥ 2kg and < 3kg	0.20	0.20	0.25	0.29	0.29	0.62	0.62
≥ 3kg and < 5kg	0.33	0.33	0.42	0.46	0.46	1.00	1.00
≥ 5kg and < 7kg	0.50	0.50	0.63	0.75	0.75	1.50	1.50
≥ 7kg and < 10kg	0.67	0.67	0.83	1.08	1.08	2.17	2.17
≥ 10kg and < 15kg	1.00	1.00	1.25	1.50	1.50	3.17	3.17
≥ 15kg and < 20kg	1.42	1.42	1.67	2.17	2.17	4.50	4.50
≥ 20kg and < 25kg	1.75	1.75	2.25	2.75	2.75	5.67	5.67
≥ 25kg and < 30kg	2.17	2.17	2.75	3.50	3.50	6.83	6.83
≥ 30kg and < 40kg	2.75	2.75	3.75	4.33	4.33	8.75	8.75
≥ 40kg and < 50kg	3.58	3.58	4.58	5.83	5.83	11.25	11.25
≥ 50kg and < 60kg	4.33	4.33	5.83	7.08	7.08	13.75	13.75
≥ 60kg and < 70kg	5.17	5.17	6.67	8.33	8.33	16.67	16.67
≥ 70kg and < 80kg	5.83	5.83	7.50	9.58	9.58	19.17	19.17
≥ 80kg and < 90kg	6.67	6.67	8.33	10.83	10.83	21.67	21.67
≥ 90kg and < 100kg	7.50	7.50	9.58	12.50	12.50	25.00	25.00
≥ 100kg and < 120kg	8.67	8.67	11.00	14.17	14.17	29.17	29.17
≥ 120kg and < 150kg	10.83	10.83	14.00	17.50	17.50	35.00	35.00
≥ 150kg	14.17	14.17	19.17	25.00	25.00	50.00	50.00

The *seats* scale in detail

Applicable to all seats and seating products,
including accessories and seat components

WITHOUT PADDING:
Taking into account
different types of
wood and plastic
monomaterials

	Without padding					With padding	Inflatable
	Metal > 50%	Solid wood > 75%	All types of wood and wood derivatives, biosourced materials ³ > 50%	Single-resin plastic > 90%	Unknown materials or assembly of 3 or more materials, with no primary material		
< 0.5kg	0.03	0.03	0.04	0.05	0.05	0.08	0.08
≥ 0.5kg and < 1kg	0.06	0.06	0.08	0.10	0.10	0.19	0.19
≥ 1kg and < 2kg	0.12	0.12	0.17	0.20	0.20	0.38	0.38
≥ 2kg and < 3kg	0.20	0.20	0.25	0.29	0.29	0.62	0.62
≥ 3kg and < 5kg	0.33	0.33	0.42	0.46	0.46	1.00	1.00
≥ 5kg and < 7kg	0.50	0.50	0.63	0.75	0.75	1.50	1.50
≥ 7kg and < 10kg	0.67	0.67	0.83	1.08	1.08	2.17	2.17
≥ 10kg and < 15kg	1.00	1.00	1.25	1.50	1.50	3.17	3.17
≥ 15kg and < 20kg	1.42	1.42	1.67	2.17	2.17	4.50	4.50
≥ 20kg and < 25kg	1.75	1.75	2.25	2.75	2.75	5.67	5.67
≥ 25kg and < 30kg	2.17	2.17	2.75	3.50	3.50	6.83	6.83
≥ 30kg and < 40kg	2.75	2.75	3.75	4.33	4.33	8.75	8.75
≥ 40kg and < 50kg	3.58	3.58	4.58	5.83	5.83	11.25	11.25
≥ 50kg and < 60kg	4.33	4.33	5.83	7.08	7.08	13.75	13.75
≥ 60kg and < 70kg	5.17	5.17	6.67	8.33	8.33	16.67	16.67
≥ 70kg and < 80kg	5.83	5.83	7.50	9.58	9.58	19.17	19.17
≥ 80kg and < 90kg	6.67	6.67	8.33	10.83	10.83	21.67	21.67
≥ 90kg and < 100kg	7.50	7.50	9.58	12.50	12.50	25.00	25.00
≥ 100kg and < 120kg	8.67	8.67	11.00	14.17	14.17	29.17	29.17
≥ 120kg and < 150kg	10.83	10.83	14.00	17.50	17.50	35.00	35.00
≥ 150kg	14.17	14.17	19.17	25.00	25.00	50.00	50.00

The *seats* scale in detail

New look for
seats with
PADDING or
INFLATABLE
seats

Applicable to all seats and seating products,
including accessories and seat components

	Without padding					With padding	Inflatable
	Metal > 50%	Solid wood > 75%	All types of wood and wood derivatives, biosourced materials ³ > 50%	Single-resin plastic ² > 90%	Unknown materials or assembly of 3 or more materials, with no primary material		
< 0.5kg	0.03	0.03	0.04	0.05	0.05	0.08	0.08
≥ 0.5kg and < 1kg	0.06	0.06	0.08	0.10	0.10	0.19	0.19
≥ 1kg and < 2kg	0.12	0.12	0.17	0.20	0.20	0.38	0.38
≥ 2kg and < 3kg	0.20	0.20	0.25	0.29	0.29	0.62	0.62
≥ 3kg and < 5kg	0.33	0.33	0.42	0.46	0.46	1.00	1.00
≥ 5kg and < 7kg	0.50	0.50	0.63	0.75	0.75	1.50	1.50
≥ 7kg and < 10kg	0.67	0.67	0.83	1.08	1.08	2.17	2.17
≥ 10kg and < 15kg	1.00	1.00	1.25	1.50	1.50	3.17	3.17
≥ 15kg and < 20kg	1.42	1.42	1.67	2.17	2.17	4.50	4.50
≥ 20kg and < 25kg	1.75	1.75	2.25	2.75	2.75	5.67	5.67
≥ 25kg and < 30kg	2.17	2.17	2.75	3.50	3.50	6.83	6.83
≥ 30kg and < 40kg	2.75	2.75	3.75	4.33	4.33	8.75	8.75
≥ 40kg and < 50kg	3.58	3.58	4.58	5.83	5.83	11.25	11.25
≥ 50kg and < 60kg	4.33	4.33	5.83	7.08	7.08	13.75	13.75
≥ 60kg and < 70kg	5.17	5.17	6.67	8.33	8.33	16.67	16.67
≥ 70kg and < 80kg	5.83	5.83	7.50	9.58	9.58	19.17	19.17
≥ 80kg and < 90kg	6.67	6.67	8.33	10.83	10.83	21.67	21.67
≥ 90kg and < 100kg	7.50	7.50	9.58	12.50	12.50	25.00	25.00
≥ 100kg and < 120kg	8.67	8.67	11.00	14.17	14.17	29.17	29.17
≥ 120kg and < 150kg	10.83	10.83	14.00	17.50	17.50	35.00	35.00
≥ 150kg	14.17	14.17	19.17	25.00	25.00	50.00	50.00

The *seats* scale overview

Applicable to all seats and seating products,
including accessories and seat components

	Without padding					With padding	Inflatable
	Metal > 50%	Solid wood > 75%	All types of wood and wood derivatives, biosourced materials ³ > 50%	Single-resin plastic ² > 90%	Unknown materials or assembly of 3 or more materials, with no primary material		
< 0.5kg	0.03	0.03	0.04	0.05	0.05	0.08	0.08
≥ 0.5kg and < 1kg	0.06	0.06	0.08	0.10	0.10	0.19	0.19
≥ 1kg and < 2kg	0.12	0.12	0.17	0.20	0.20	0.38	0.38
≥ 2kg and < 3kg	0.20	0.20	0.25	0.29	0.29	0.62	0.62
≥ 3kg and < 5kg	0.33	0.33	0.42	0.46	0.46	1.00	1.00
≥ 5kg and < 7kg	0.50	0.50	0.63	0.75	0.75	1.50	1.50
≥ 7kg and < 10kg	0.67	0.67	0.83	1.08	1.08	2.17	2.17
≥ 10kg and < 15kg	1.00	1.00	1.25	1.50	1.50	3.17	3.17
≥ 15kg and < 20kg	1.42	1.42	1.67	2.17	2.17	4.50	4.50
≥ 20kg and < 25kg	1.75	1.75	2.25	2.75	2.75	5.67	5.67
≥ 25kg and < 30kg	2.17	2.17	2.75	3.50	3.50	6.83	6.83
≥ 30kg and < 40kg	2.75	2.75	3.75	4.33	4.33	8.75	8.75
≥ 40kg and < 50kg	3.58	3.58	4.58	5.83	5.83	11.25	11.25
≥ 50kg and < 60kg	4.33	4.33	5.83	7.08	7.08	13.75	13.75
≥ 60kg and < 70kg	5.17	5.17	6.67	8.33	8.33	16.67	16.67
≥ 70kg and < 80kg	5.83	5.83	7.50	9.58	9.58	19.17	19.17
≥ 80kg and < 90kg	6.67	6.67	8.33	10.83	10.83	21.67	21.67
≥ 90kg and < 100kg	7.50	7.50	9.58	12.50	12.50	25.00	25.00
≥ 100kg and < 120kg	8.67	8.67	11.00	14.17	14.17	29.17	29.17
≥ 120kg and < 150kg	10.83	10.83	14.00	17.50	17.50	35.00	35.00
≥ 150kg	14.17	14.17	19.17	25.00	25.00	50.00	50.00



Textile Decoration

Product categories in this new category



**Curtains and
accessories**

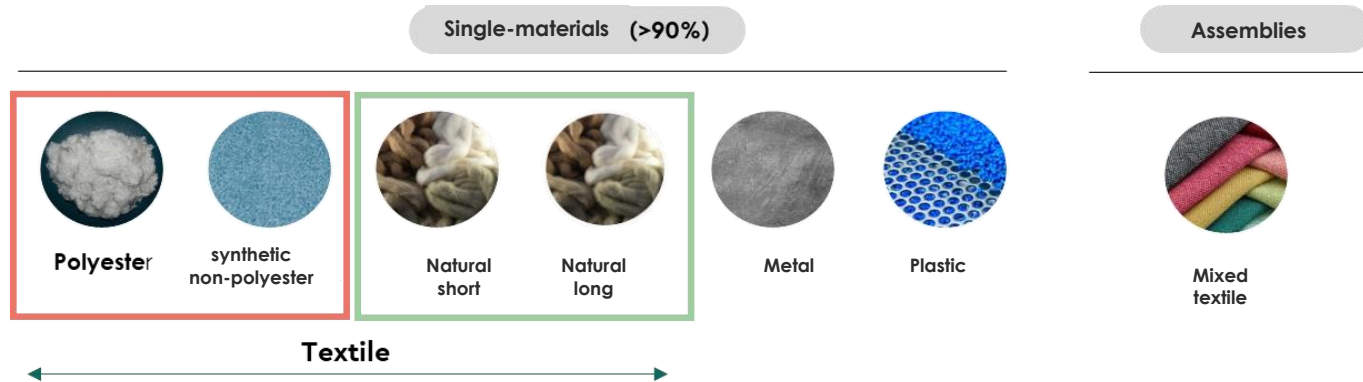


**Decorative or
technical carpets
(doormats)**



Carpets for events

Complex products to collect and recycle



► Objective :

create industrial solutions for recycling these decorative textiles:

- **Reuse as a priority objective**

- **A new recycling channel operational and viable as for polypropylene walkway carpets** (PP), already collected and recycled

The *textile** scale in detail

* textile decoration and furnishing textiles

	Non-synthetic textiles or biosourced materials > 50%	Synthetic textiles > 50%	Unknown materials or assembly of 3 or more materials
Interior blinds, curtains, net curtains, decorative rugs			
< 1kg	0.03	0.05	0.05
1 to 3kg	0.10	0.10	0.14
> 3kg	0.24	0.29	0.34
Doormats, functional mats, small decorative textile items			
< 1kg	0.07	0.07	0.13
1 to 3kg	0.19	0.19	0.31
> 3kg	0.46	0.46	0.75

Identical
pricing
structure

	Metal	Wood	Metal	Wood	Non-synthetic textiles or biosourced materials > 50%	Synthetic textiles > 50%	Unknown materials or assembly of 3 or more materials
	Single-material > 90%		Primary material > 50%				
Wall decoration accessories and frames							
< 1kg	0.02	0.03	0.02	0.03	0.07	0.07	0.13
1 to 3kg	0.03	0.07	0.05	0.09	0.19	0.19	0.31
> 3kg	0.05	0.17	0.12	0.17	0.46	0.46	0.75

The *textile** scale in detail

The *textile** scale in detail

USEFUL : application of the sqm rate

	Non-synthetic textiles or biosourced materials > 50%	Synthetic textiles > 50%	Non-synthetic textiles or biosourced materials > 90%	Synthetic textiles > 90%	Other
Interior blinds, curtains, net curtains (m ²)	0.15	0.15	0.10	0.13	0.18
Decorative rugs (m ²)	0.18	0.28	0.18	0.28	0.56
Doormats, functional mats (m ²)	0.36	0.41	0.36	0.36	0.59
Event carpets (m ²)	-	0.03	-	0.03	-

	W < 10cm	W 100 to 200cm	W > 200cm
€/linear meter (1m)	0.02	0.04	0.08

Upholstery textiles: a more appropriate price per linear meter based on roll widths



Furnishing textiles :

Fabric sold by the metre to be transformed into elements for covering or protecting an item of furniture. Example: fabric for headboard cover or sofa cover.



The "small producers" scale

Changes in 2024: the disappearance of the annual package

- The regulations stipulate that tonnage marketed is the criterion for simplified declaration procedures.
 - The criteria is no longer marketing sales, but marketing tonnage (15 tons per year).
 - The Annual fee has been replaced by simplified coding.



To be implemented for products sold in 2024, first declaration on January 1, 2025.

Ask the right questions to ensure compliance:

► Can I benefit from simplified declaration procedures in 2024?

✓ YES

YES If I put less than **15 tons** of furniture on the market each year.

AND **Eather** items sold weigh **LESS than 2 kg/unit**, with no limit on quantity.

Eather items marketed weigh **MORE THAN 2 kg/unit**, with a limit of 1000 units.

How do you prepare for January 1, 2024?

- **As of January 1, 2024, for launches in 2023**, companies with sales of less than €500,000 will be able to declare their sales using the flat-rate system (i.e. 1.6% of sales).
- **Integration of the new eco-participation scale**, with simplified codes to start the year 2024: companies eligible for this simplified scheme must anticipate and prepare the coding of their products for invoicing their customers and for their Ecomaison declaration.
- **In January 2025**, the "small-scale marketer" will make his first declaration using the new 2024 coding, if he meets the new criteria.

Possible simplification for companies with low volumes

► A small producer is a marketer whose annual tonnage is less than 15 tonnes.

- Each piece weighing less **than 2kg** is eligible, **up to a limit of 15 tons** marketed per year.
- For pieces weighing **over 2kg**, a maximum of **1,000 pieces** may be marketed, up to a limit of **15 tons**.

► This scale is increased :

- Material without specification and weight of highest decile taken into account
- Declaration per 10 products

The *small producers* scale in detail

Category /
type of
products /
simplified
materials

Furniture, furnishing, and fit-out items

Category	Product type	Material	Unit brackets	Flat rate in € excl. VAT per bracket	Scale code to be declared
All categories	Storage units	Unspecified material	10	38.33	020170009
	Desks, tables, worktops	Unspecified material	10	52.50	02019000900
Supplementary furnishings	Accessories (hardware, plastic boxes)	Unspecified material	10	2.90	02022000900
	Shelves and shelving units	Unspecified material	10	11.70	02020000900
Garden	All types of furniture	Unspecified material	10	23.33	08000000900

Per 10
units

With a
dedicated
product
code

Seating and bedding

Category	Product type	Material	Unit brackets	Flat rate in € excl. VAT per bracket	Scale code to be declared
Seats	Inflatable seats	Plastic	10	3.80	090431
	Chairs	Non-padded	10	10.80	09043000900
	Armchairs and office chairs	Padded	10	45.00	09044000900
	Sofas (2 seats)	Padded	10	166.67	09045000900
	Sofas and lounge sofas (3 seats or more)	Padded	10	350.00	09046000900
Bedding	Mattresses	Unspecified material	10	125.00	04061120900
	Bed legs	Unspecified material	10	1.33	04025120900
	Inflatable mattresses	Plastic	10	17.00	04023000900
	Mattress overlays	Unspecified material	10	62.50	04060120900
	Bed bases	Padded	10	70.83	04062000900
	Storage beds	Mechanical or non-mechanical	10	112.50	04024000900
	Bed frames	Unspecified material	10	83.40	03018120280
	Headboards	Unspecified material	10	25.00	04077130120
Padded seating and bedding products	Cushions and pillows	Padded	10	1.67	11031120900
	Duvets and sleeping bags	Padded	10	5.00	11029120900
Decorative textile items	All types	Unspecified material	10	7.50	12071120900

Application
of a higher
unit amount



Our services to support you

Tools to help you update your rates



Éléments d'ameublement

Mobilier, Sièges, Literie,
Décoration textile.

Barème et grille d'éco-participation

MISE À JOUR 2024



► Updating the codifier in Excel

► Scale applicable from January 1, 2024, downloadable

► Call Center 0811 69 68 70 (0.05ct/call and call charge)



Premiums for incorporating recycled materials

Continuation and updating of BONUSSES for the incorporation of recycled materials

Premium paid according to recycled content for Wood and Foam

New eco-modulation and bonus program to be announced ...

**PRIMES D'INCORPORATION
DE MATIÈRE RECYCLÉE**

Incorporation de matière recyclée
dans les éléments d'ameublement :
les incitations financières dont vous
pouvez bénéficier



Eco-mobilier innove et propose aux entreprises signataires du contrat de services de bénéficier d'incitations financières pour l'incorporation de matière recyclée.



Find out more

Discover all the useful documents on [Espace-services.com](https://espace-services.com)

Follow our news on our website and our networks



Need help?

Call us

0811 69 68 70

Du lundi au vendredi de 9h à 17h
Service 0,05€/appel + prix d'appel

Write to us at [**contact@ecomaison.com**](mailto:contact@ecomaison.com)



Thank you