

# Presentation of changes to the 2026 Building scale

22.10.2025





ecomaison

# Regulatory news

# Background of the sector: **Moratorium and reform**

- **20 March:** announcement of a moratorium by the Minister
- **4 April:** First consultation meeting organised by the Minister
- **April/May:** consultation aimed at overhauling the sector
- **26 August to 23 September 2025:** consultation to formalise the moratorium measures (entry into force of certain measures until 2027) ⇒ Draft order under consultation in French ✎
- Contribution of stakeholders to rebuilding the sector until the end of September (between 25 August, with the first kick-off meeting, and 29 September, with the fifth plenary session) ⇒ appointment with the firm and DGPR on 30 September. An additional month to move towards consensus with three new plenary sessions scheduled for October.
- **First half of 2026:** implementation of the reformed sector

**Moratorium:** Suspension of measures due to come into force in 2025. This must take the form of an order postponing these measures, but cannot cancel the provisions initially set out in the EPR decree.

**Reform:** The Ministry has commissioned OCAB to organise and facilitate consultation with all stakeholders as part of the overhaul of the REP.

- The Ministry is awaiting the conclusions of this consultation process by the end of September 2025.
- The provisions that will be adopted following this consultation may revert to the initial provisions of the REP via an amending decree and new specifications from 2026 onwards (current approval expires on 12/31/2027).

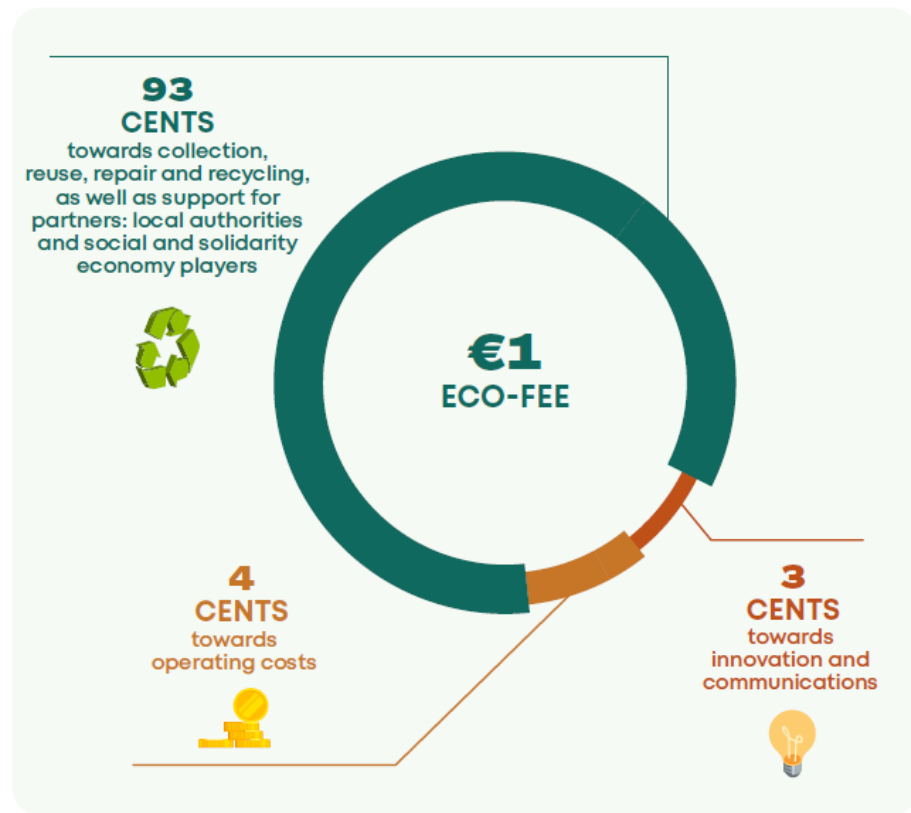


ecomaison

# Reminder of the principles of the Building scale

# WHAT HAPPENS TO my eco-fee?

The eco-fee allows Ecomaison to organise and **fund the collection** of building and furnishing products and materials, as well as **the repair, reuse and recycling** of sorted products.



## PRICING IS CALCULATED BASED ON 3 CRITERIA:

### › Product features

The rate depends on the product type, weight, materials used and the product's recyclability or recycling disruptors.

### › Management costs

The rate reflects the real costs of the sector, including product collection, sorting, transportation and processing. The smaller the object, the more logistics required to collect it, resulting in higher costs.

### › Eco-modulations

Bonuses and penalties may apply depending on eco-design criteria (extension of useful life, incorporation of recycled materials, recycling disruptors, etc.).

# How can I improve my contribution?

Since 1 May 2024, rates have included eco-modulations for:

1. the recyclability of products based on materials
2. sustainable resource management

In addition, a bonus is also offered to encourage:

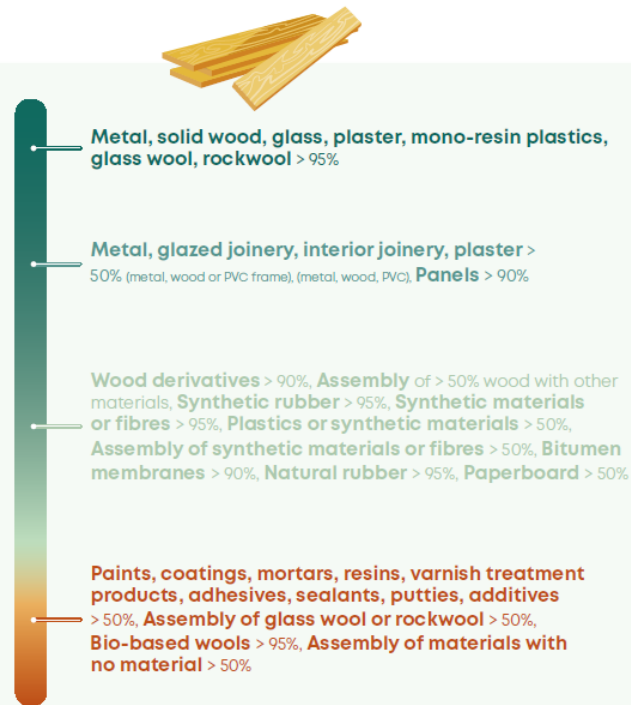
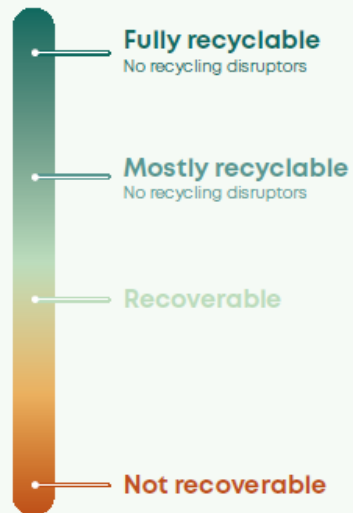
- the incorporation of recycled raw materials (IRM)



Eco-modulations are a scheme provided by Ecomaison to **reward the circular efforts** of our most virtuous members

# 1. Modulation based on product **recyclability** (1/2)

## 4 Ecomaison recyclability levels



**WE PROVIDE SUPPORT:**  
The item code incorporates the eco-modulation for recyclability **It's easy!**

# 1. Modulation based on product **recyclability**: Application and methods of proof (2/2)

## ► Application of the rates to the product:

- Reduced rate applied to the product placed on the market.

## ► A mandatory recyclability criterion:

- The levels '**mostly recyclable**' and '**fully recyclable**' apply in the absence of physical or chemical recycling disruptors.

## ► Evidence documents:

- Product data sheets providing information on the composition of materials and any hazardous substances in the products resulting from the recyclability analysis tool.



## 2. Taking sustainable resource management into account (1/2)

The sustainable product management criterion relates to the material of which the product is made.

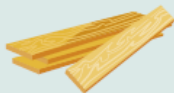
Sustainable management means that:

- › the product meets a minimum threshold concerning the amount of its materials sourced from **sustainably managed resources**;
- › the products or their constituent materials are **certified** or carry a corresponding label.



\*NB: the sustainable management bonus is subject to the absence of recycling disruptors.

### Eligible materials:



Wood



#### Bio-based materials

(materials based on fibres of plant or animal origin other than wood, wood derivatives and paperboard)

### ► Application of the tariff to the product:

- Reduced rate applied to the product placed on the market.

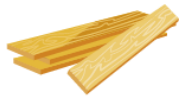
### ► Evidence documents:

- Certificates and purchase invoices

## 2. Taking sustainable resource management into account (2/2)

### SUSTAINABLE MANAGEMENT - WOOD

The “Sustainable Management - Wood” rate is applicable in accordance with the following conditions:



#### Solid wood and similar products

Minimum “Sustainable Management” wood content in the product:  
Building: **70%**

##### Material

“Sustainable management” wood, i.e. derived from sustainably managed forests and certified:

- PEFC, FSC;
- or under any equivalent due diligence system



#### Wood-based panel products (PP, OSB)

Minimum “Sustainable Management” wood-based panel product content in the product:  
Building: **70%**

##### Material

“Sustainable management” wood, i.e. derived from sustainably managed resources and certified:

- PEFC, PEFC Recycled, FSC Mix, FSC Recycled;
- or under any equivalent due diligence system

### OTHER RENEWABLE RESOURCES

The “Bio-Based Materials” rate is applicable for building products and materials that are mainly made of materials and fibres of plant or animal origin other than wood, wood derivatives and paperboard.



### Labels & Certification



or equivalent

These labels and certifications are accepted to indicate the resource's sustainable management.

# Product example: Solid wood frame

## Example of cumulative 'eco-modulations'

Sustainable timber management

Modulated rate 



9,80 € HT/tonne

+

Without recycling  
disruptor  
**Fully recyclable**

Reduced rate (not  
PEFC/FSC certified) 



19,60 € HT/tonne

Best  
price

Eco-design efforts

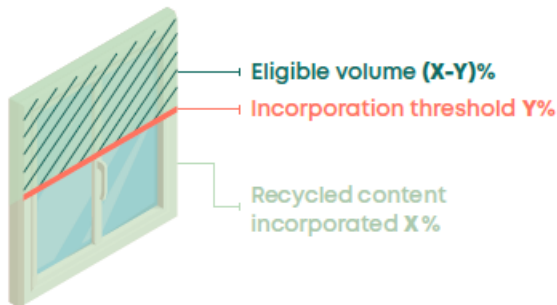


### 3. The Bonus for the incorporation of recycled materials (IRM): Ecomaison rewards eco-design initiatives

- It is calculated based on the amount of recycled materials incorporated into your product.

#### How to find out if my product is eligible

Material making up the product:



If the content of post-consumer recycled material incorporated (X%) is greater than the threshold (Y%), the IRM bonus is applicable over and above the threshold, i.e. at (X-Y)%. Otherwise, the bonus shall not apply.

#### Amounts and thresholds applicable in 2026 for each of the products offered:

Material in the product	Unit amount €/t of recycled material incorporated into the product above the trigger threshold	Trigger threshold in the material	€/t unit amount of the material in the product once the integration rate is reached	Target rate of integration into the material
Wood in chipboard	€40/t	35%	-	-
Wood in MDF/HDF panels	€40/t	> 0%	-	-
PVC in windows <sup>(1)</sup>	€450/t	20%	-	-
PU foam in thermal or acoustic insulators	-	-	€50/t	70%
Metal in reinforcing steel			€1.10/t	90%

(1) The PVC quantity taken into account in the calculation of the bonus corresponds to 30% of the total weight of the tonnes declared and commercialised.

# IRM Bonus application criterion

## ► Three cumulative conditions to qualify for the bonus:



### Sources

The recycled material comes exclusively from post-consumer waste, i.e. end-of-life products.

It must:

- come from a holder/operator listed by a government-approved eco-organisation as part of the EPR strategy;
- have been collected, sorted, recycled and incorporated within 1,500 km of France's barycentre and/or in an EU Member State.



### Quality

The recycled material must not compromise the future recyclability of the manufactured product.

It must not contain recycling disruptors beyond the established thresholds.



### Quantity


Bonuses and eco-modulations are calculated according to the quantities of post-consumer recycled waste incorporated into the material making up the finished product.

# Application and modes of proof

## ► A bonus paid after declaration:

- The premium is calculated on the basis of the declared quantity of post-consumer recycled materials incorporated into the products (above a minimum incorporation threshold or rate)

## ► Declaration procedures

- Coming to your account  [Espace Services](#) by the end of Q4 2025

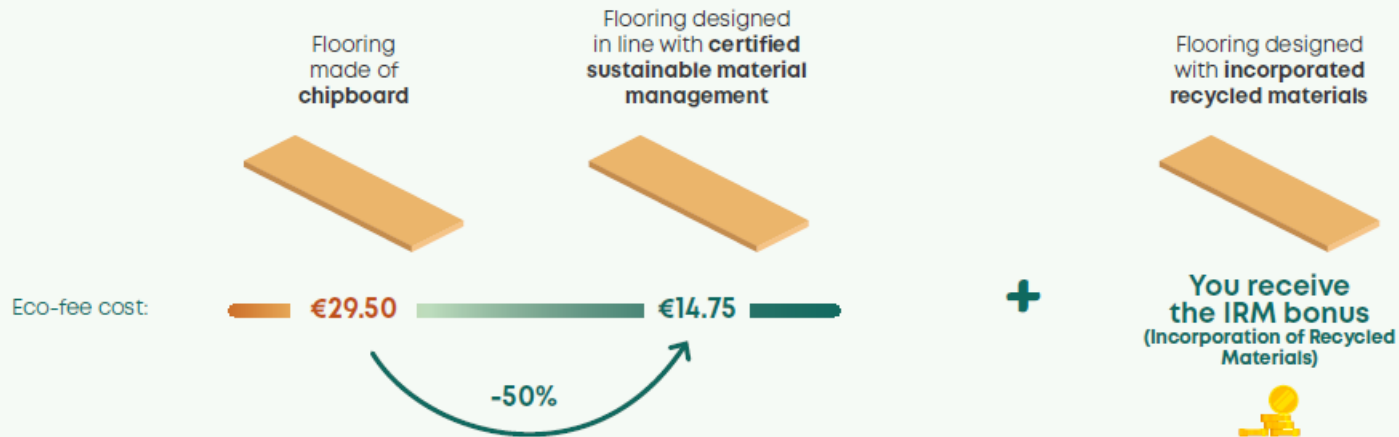
## ► Documents to be provided:

- Completed declaration annex with:
  - Volume or tonnage of material or product supply containing recycled material
  - Recycled content incorporated into the material or product
- Specific certifications or attestations specifying:
  - The origin of the eligible recycled material incorporated into the material or product
  - The recycled content in the material

## Product example – Building sector

### Example of accumulation of 'bonuses'

For wood flooring made of > 90% chipboard



Unit rates - in €/tonne excl. tax



ecomaison

# Developments in 2026



# The products concerned

■ Following approval by the Sector Committees and Stakeholders in Building sector in September 2025, Ecomaison is updating the eco-fee rates for the following products:

- Windows
- Bituminous membranes
- Plaster
- Plastic flooring
- Fixed floor carpets
- Glass and rock wool

■ These rates are applicable from 1 January 2026.

■ All other rates remain unchanged.

## Tarifs 2026 : les produits concernés

Materials	Ecomaison rates 2025	Ecomaison rates 2026
<b>Windows</b> €/ unit	€2.00	<b>€2.85</b>
<b>Bituminous membranes</b> €/ tonne	€36.00	<b>€41.61</b>
<b>Plaster (&lt;= 13mm)</b> €/ m <sup>2</sup>	€0.06	<b>€0.12</b>
<b>Plastic flooring</b> €/ tonne	€36.00	<b>€46.18</b>
<b>Fixed floor carpets</b> €/ tonne	€36.00	<b>€50.94</b>
<b>Glass wool</b> €/ tonne	€30.00	<b>€36.20</b>
<b>Rock wool</b> €/ tonne	€30.00	<b>€33.69</b>



# The tools at your disposal

# The rates applicable from 1 January 2026 are available online [here](#)





**2026  
PRICE GUIDE**

Meet your obligations  
and manage  
your eco-fee  
via eco-design

**BUILDING PRODUCTS  
AND MATERIALS**

APPLICABLE FROM 1<sup>st</sup> JANUARY 2026  
VERSION DATED 30 SEPTEMBER 2025





## STRUCTURAL WORK, FRAMEWORK, SHELL, ROADS AND EXTERNAL WORKS

### Rates in € (excl. tax)

(Rates exclusively applicable to mono-materials comprising over 90% or 95% of the relevant material (excluding 50% miscellaneous products and materials).  
See the complete list of rates.)

The following table was used to convert figures between tonnes and cubic metres.

TYPE OF WOOD	FRESH WOOD DENSITY	DRY WOOD DENSITY
Softwood	534 kg/m³	500 kg/m³
Glued laminated timber - Glulam (GLT)		500 kg/m³
CLT		540 kg/m³
Plywood - LVL	N/A	600 kg/m³
OSB		600 kg/m³
Chipboard		650 kg/m³
Hardwoods	800 kg/m³	700 kg/m³
MDF, HDF	N/A	730 kg/m³
Exotic wood	840 kg/m³	800 kg/m³

### GLOSSARY:

t = tonne

PRODUCTS/ MATERIALS	COMPOSITION	UNIT RATE - IN €/M³	
		Other origins	Sustainable management
Products products	Solid wood FRESH wood > 20% moisture content	€9.76	€4.38
	Solid wood ROUGH DRY < 20% moisture content	€9.80	€4.90
	Solid wood DRY AND PLANED < 20% moisture content	€11.00	€5.50

PRODUCTS/ MATERIALS	COMPOSITION	UNIT RATE - IN €/T		UNIT RATE - EQUIVALENT IN €/M³	
		Other origins	Sustainable management	Other origins	Sustainable management
Engineered wood	Cross-Laminated Timber (CLT)	€23.60	€11.80	€12.74	€6.37
	Glulam structural elements, glued laminated timber (GLT), bolted or otherwise	€23.60	€11.80	€13.80	€5.90
	Laminated Veneer Lumber (LVL)	€23.60	€11.80	€14.36	€7.08

## Rates in pictures

Building 2026 Price Guide - 17



1 Chipboard  
(sustainable management) - €11.80

2 Wooden structural elements  
(sustainable management) - €11.80

# The complete tables of applicable rates are available via two tools :

► Online tool for coding and displaying rates: [access](#) 

► List of products within scope (Excel file) :

❑ [Download the 2026 grid](#) 

Find products eligible for eco-modulation by filtering on column I



## Good to know

The rates for products and materials in category 1 will remain unchanged in 2026 – the 2025 scale will continue to apply.

More information on the dedicated Ecominéro page:

<https://www.ecominero.fr/eco-contribution-participation-rep/> 



# Declaration procedures

# Reminder of the declaration schedule

Quarterly declarations	Marketing period	Declaration period	Payment deadline
	<b>Q4 2025</b> 1 October to 31 December	1 to 31 January 2026	15 February 2026
	<b>Q1 2026</b> 1 January to 31 March	1 to 30 April 2026	15 May 2026
	<b>Q2 2026</b> 1 April to 30 June	1 to 31 July 2026	15 August 2026
	<b>Q3 2026</b> 1 July to 30 September	1 to 31 October 2026	15 November 2026
	<b>Q4 2026</b> 1 October to 31 December	1 to 31 January 2027	15 February 2027
Annual declaration	Year 2025	Declaration period	Payment deadline
	from 1 January to 31 December	1 to 31 January 2026	15 February 2026
	Year 2026	Declaration period	Payment deadline
	from 1 January to 31 December	1 to 31 January 2027	15 February 2027

# Scale for simplified declaration

## ► Marketing turnover of less than €1 million

- For products and materials related to the construction industry that have not already been invoiced with an eco-contribution
- Calculated on the basis of a percentage of their turnover from products subject to tax, excluding tax

## ► Scale :

BASED ON 2025 BUILDING SALES OF LESS THAN €1M EXCLUDING TAX	
ACTIVITIES	PERCENTAGE TO BE APPLIED ACCORDING TO MAIN ACTIVITY
Metalwork & Locks	0.01%
Roofing	0.12%
Partition & Insulation	
Framework / Flooring / Interior & Exterior Joinery	
Electricity / Plumbing / Heating	
Paint / Wall covering / Surface treatment	
Other construction tasks (masonry, earthworks, tiling)	



## Various news items

### ► Minimum charge

- ❑ Set at €15 excluding VAT for quarterly returns and €60 excluding VAT for annual returns
- ❑ his minimum declaration fee applies per member and per sector, regardless of the tonnages declared
- ❑ From 2026 – First declaration (of Q1) in April 2026



### ► Membership fees

- ❑ €50 excluding VAT charged upon joining each programme upon signing the contract
- ❑ or all new members from 1 January 2026





## For further information

Discover all the useful documents on  
[ecomaison.com](https://ecomaison.com)

Follow our news on our website and social media



Need help?



[contact@ecomaison.com](mailto:contact@ecomaison.com)