



ecomaison

2026 PRICE GUIDE **Meet your obligations and manage your eco-fee via eco-design**

**DIY AND GARDENING
PRODUCTS**

APPLICABLE FROM 1ST JANUARY 2026
VERSION DATED MARCH 2026



CONTENTS

P.4

**WHAT HAPPENS TO
my eco-fee?**

P.6

**CALCULATING
my eco-fee and
IMPROVING
my environmental
performance**

P.14

**CODIFYING
my products**

P.17

**KNOWING
the rates for 2026**

P.25

**APPENDICES
and data sheets**

PRODUCTS concerned



CATEGORY 3



Hand tools and accessories



Large non-electric, non-combustion items and machinery



Tools and supports for working at height



Personal protection equipment and accessories for DIY



Tarpaulins for DIY



Buckets, troughs and containers

CATEGORY 4



Garden upkeep hand tools



Personal protection equipment for gardening



Flower pots and containers



Tarpaulins, covers, films and nets



Outdoor equipment



Non-masonry outdoor structures



CATEGORY 1



Painting tools



CATEGORY 2



Combustion engine-powered machinery and equipment

The following are excluded from the regulatory scope:

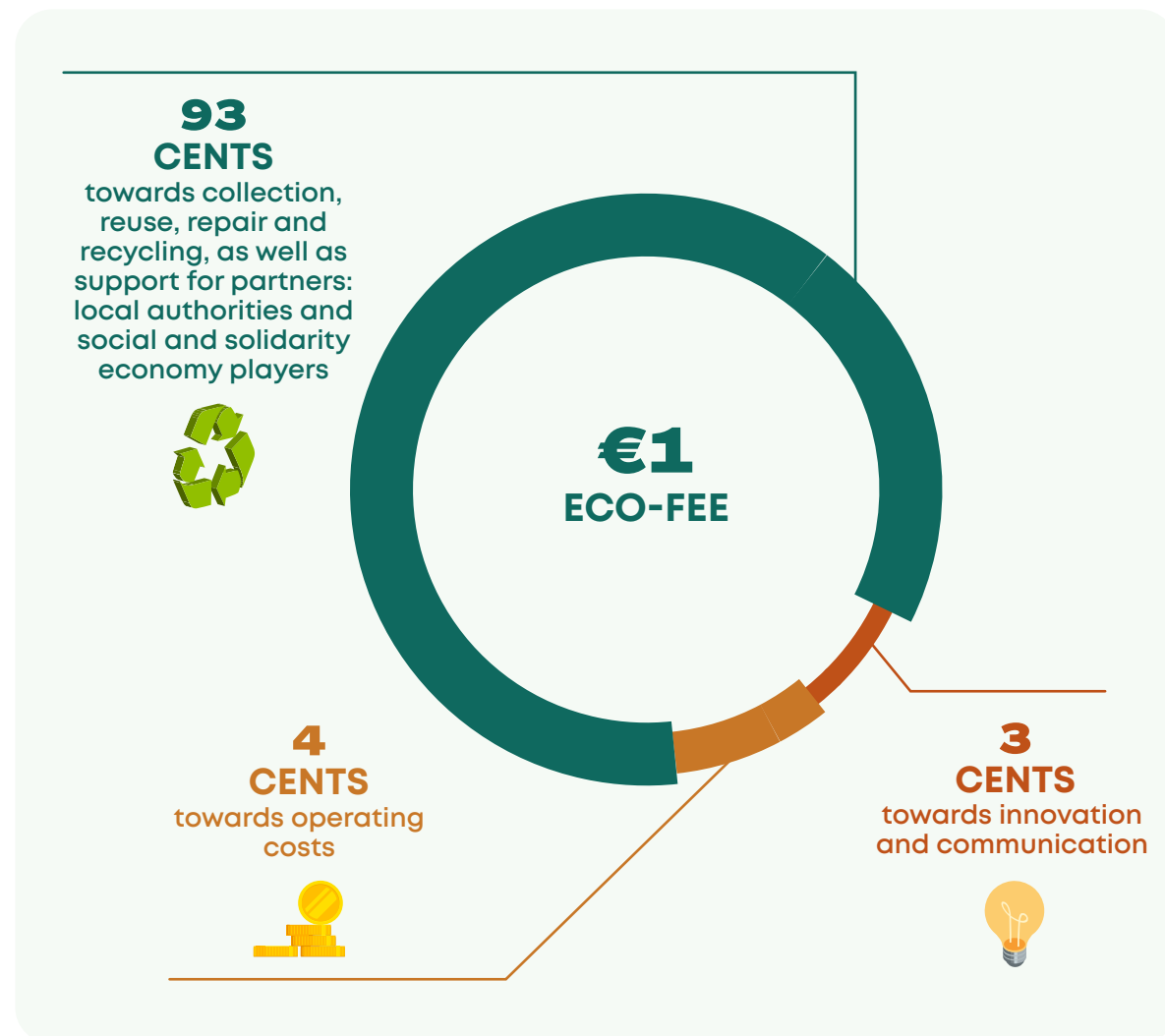
- Products designed exclusively for professional use.
- Hardware (Building Products and Materials EPR, also known as Building EPR).
- Masonry constructions (Building EPR).
- Decorative garden ornaments.
- Electrical and electronic devices (WEEE EPR).
- Paddling pools covered by the Toys EPR channel.
- Swimming pools covered by the Building EPR channel.

WHAT HAPPENS TO my eco-fee?



WHAT HAPPENS TO my eco-fee?

The eco-fee allows Ecomaison to organise and **fund the collection** of building and housing products and materials, as well as **the repair, reuse and recycling** of sorted products.



Source: key figures 2024

PRICING IS CALCULATED BASED ON 3 CRITERIA:

› Product features

The rate depends on the product type, weight, materials used and the product's recyclability or recycling disruptors.

› Management costs

The rate reflects the real costs of the sector, including product collection, sorting, transportation and processing. The smaller the object, the more logistics required to collect it, resulting in higher costs.

› Eco-modulations

Bonuses and penalties may apply depending on eco-design criteria (extension of useful life, incorporation of recycled materials, recycling disruptors, etc.).



calculating my eco-fee and **improving** my environmental performance

All the info on eco-modulations

Rewarding my commitment

what are eco-MODULATIONS?

- › Eco-modulations are a scheme provided by Ecomaison to **reward the circular efforts** of our most virtuous members.
- › By sourcing raw materials from renewable or recycled resources, extending product useful life and implementing a circular purchasing policy, you can **improve your eco-fee and/or benefit from bonuses**.
- › By adopting these practices, you can optimise your obligations, **make your business more circular and drive your industry's performance**.

My Ecomaison invoice

	Total
Eco-fee for initial market launch on French territory (new or second-hand) I owe Ecomaison	€A
Reduction of eco-fee due to eco-modulations	€B
My total eco-fee	A-B = €C
Bonuses for incorporating recycled materials Ecomaison owes me	€D
MY TOTAL CONTRIBUTION PAID	C-D = €E

How can I improve my contribution?



Sustainable management

Recyclability

Extension of useful life
Provision of spare parts



Incorporation of recycled materials (IRM)

SUSTAINABLE resource management

The sustainable product management criterion relates to the material of which the product is made.

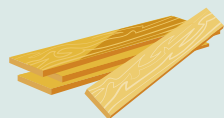
Sustainable management means that:

- › the product meets a minimum threshold concerning the amount of its materials sourced from **sustainably managed resources**;
- › the products or their constituent materials are **certified** or carry a corresponding label.



*NB: the sustainable management bonus is subject to the absence of recycling disruptors.

Eligible materials:



Wood



Bio-based materials

made from plant or animal fibres other than wood, wood derivatives, paper and cardboard



WE PROVIDE TOOLS:

To view the list of recycling disruptors, see the [dedicated page](#) (in French only).



WE PROVIDE SUPPORT:

The item code incorporates eco-modulation for sustainable management.

It's easy!

RECYCLABILITY

The recyclability of a product is established according to **5 cumulative criteria** depending on either the sector (eco-organisation's responsibility) or the product (manufacturer's responsibility) (according to [Article 13 of the AGECE Law](#)):



Sector dependent

1

The possibility of efficient **collection** on a regional scale via public access to local collection points.

2

The possibility of **sorting**, i.e. being directed to recycling channels to be recycled.

3

The absence of elements or substances in the material, product or packaging that **disrupt sorting** or recycling, or limit the use of the recycled material.



Product dependent

4

The product is recyclable only if, after treatment, **at least 50% of its initial mass can actually become a usable material again.**



Sector dependent

5

The possibility of **recycling on an industrial scale** and in practice, in particular through a guarantee that the quality of the recycled material obtained is sufficient to guarantee **long-term use and that the recycling sector** can demonstrate a good **capacity to handle** the products that can be integrated into it.



WE PROVIDE TOOLS:

Discover the [list of disruptors](#).

To support your eco-design efforts, Ecomaison has designed a [material recyclability scale](#).



Levels of recyclability

Your product's recyclability depends on its constituent materials.

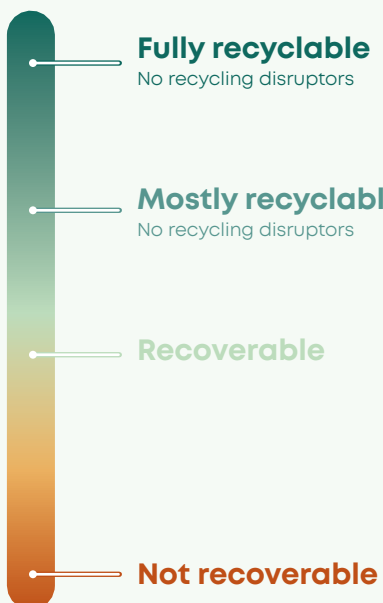
To benefit from this eco-modulation, you must take into account the materials used during the manufacture of the product.

A product composed mainly of metal, wood, single-resin plastics or inert materials will entitle you to a **lower eco-fee, as it is more easily recyclable** than a product made from a combination of materials or multiple resins.



*NB: the recyclability bonus is subject to the absence of non-sustainable materials and recycling disruptors.

4 Ecomaison recyclability levels



WE PROVIDE SUPPORT:
The item code incorporates the eco-modulation for recyclability **It's easy!**



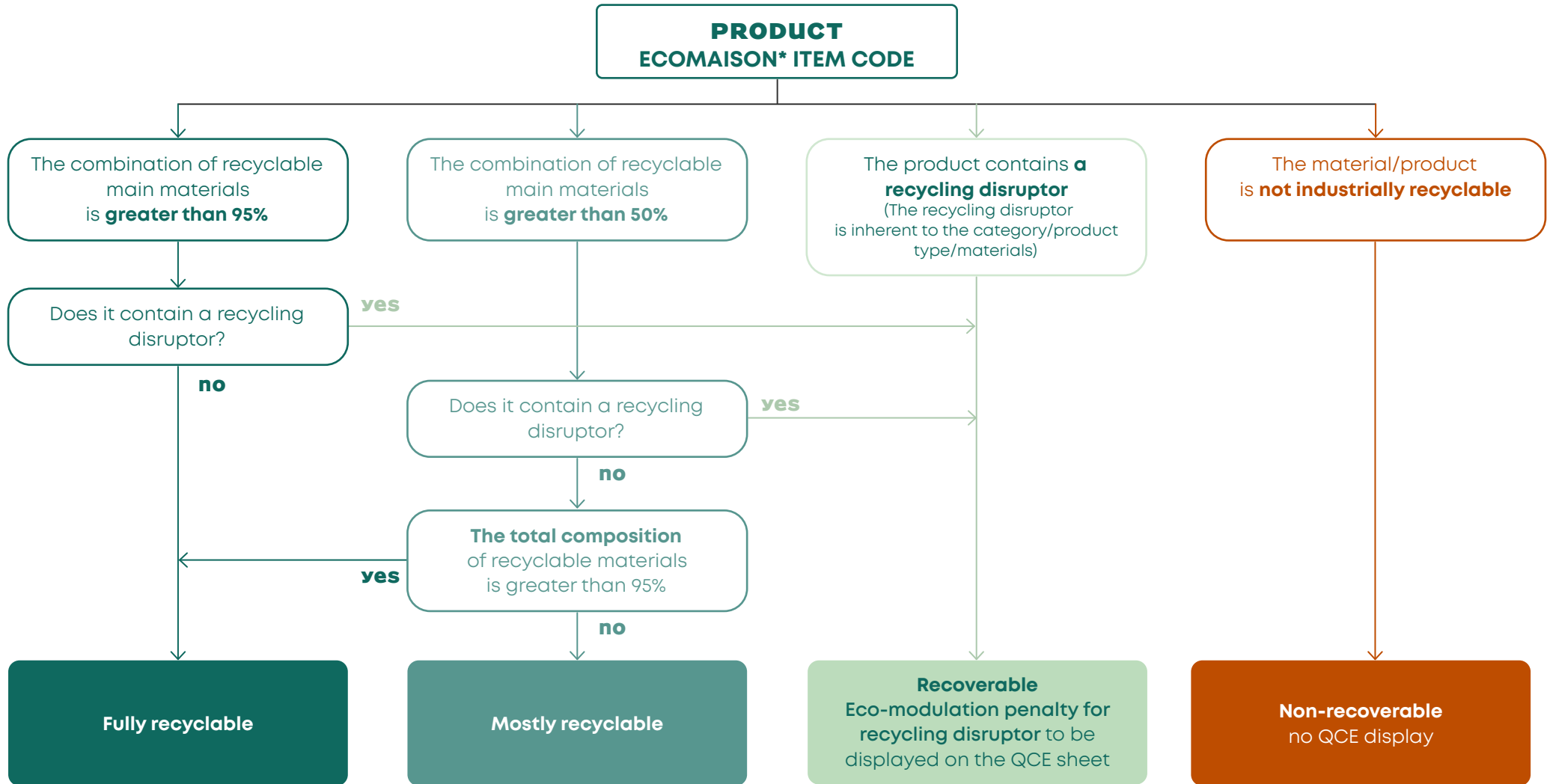
TO FIND OUT

the recyclability of the products you launch onto the market, head to the corresponding [on the dedicated page](#).

To view the list of recyclable materials, consult the [technical data sheet](#).

DEFINITION OF the level of recyclability

To help you determine the recyclability of your products, **Ecomaison provides a calculation tool** based on eco-fee codification according to the following reasoning:



***The Ecomaison item code contains the following information:**

- Product category;
- Type;
- Main material;
- Product weight.

RECYCLABILITY LEVELS for DIY and gardening products



- **Metal** > 95%
- **Solid wood or Solid wood + metal** > 95%
- **Single-resin plastics** > 95%
Other recyclable synthetic material > 95%
- **Metal** > 50%
No disruptors
- **Solid wood** > 50%
No disruptors
- **Inert materials** > 95%
- **Ceramic** > 95%
- **Synthetic textiles or plastic mix** > 95%
- **All materials**



PROVISION of spare parts

This eco-modulation rewards the **provision of spare parts by the marketer** (manufacturer or distributor) to the consumer on request:

- › inherent to the main function of the product (excluding accessories);
- › available even after the final marketing of the product (for a duration of 5 years for DIY and gardening products).



*NB: the spare part availability bonus is subject to the absence of recycling disruptors.



WE PROVIDE SUPPORT:

The item code includes the eco-modulation for extending the useful life.

It's easy!

Eco-modulated codes for spare parts end with the number 1.

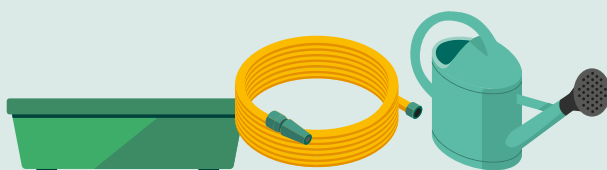


INCORPORATION of recycled materials (IRM)

Ecomaison rewards you for **incorporating recycled raw materials** into a product launched on the market⁽¹⁾.

The bonus is calculated based on the amount of recycled materials incorporated into your product.

This concerns products containing the following materials⁽²⁾:



Plastics

(1) A breakdown by material can be found in the [data sheets](#).

(2) The technical details of the materials concerned, recycling disruptors, minimum incorporation thresholds and the [list of hazardous or REACH-classified substances](#) can be found in the fact sheets included in the appendices.



*NB: the minimum thresholds of post-consumer recycled materials incorporated (by materials or products) are indicated in the [data sheets](#) appended to the price guide.

These materials are eligible if they:

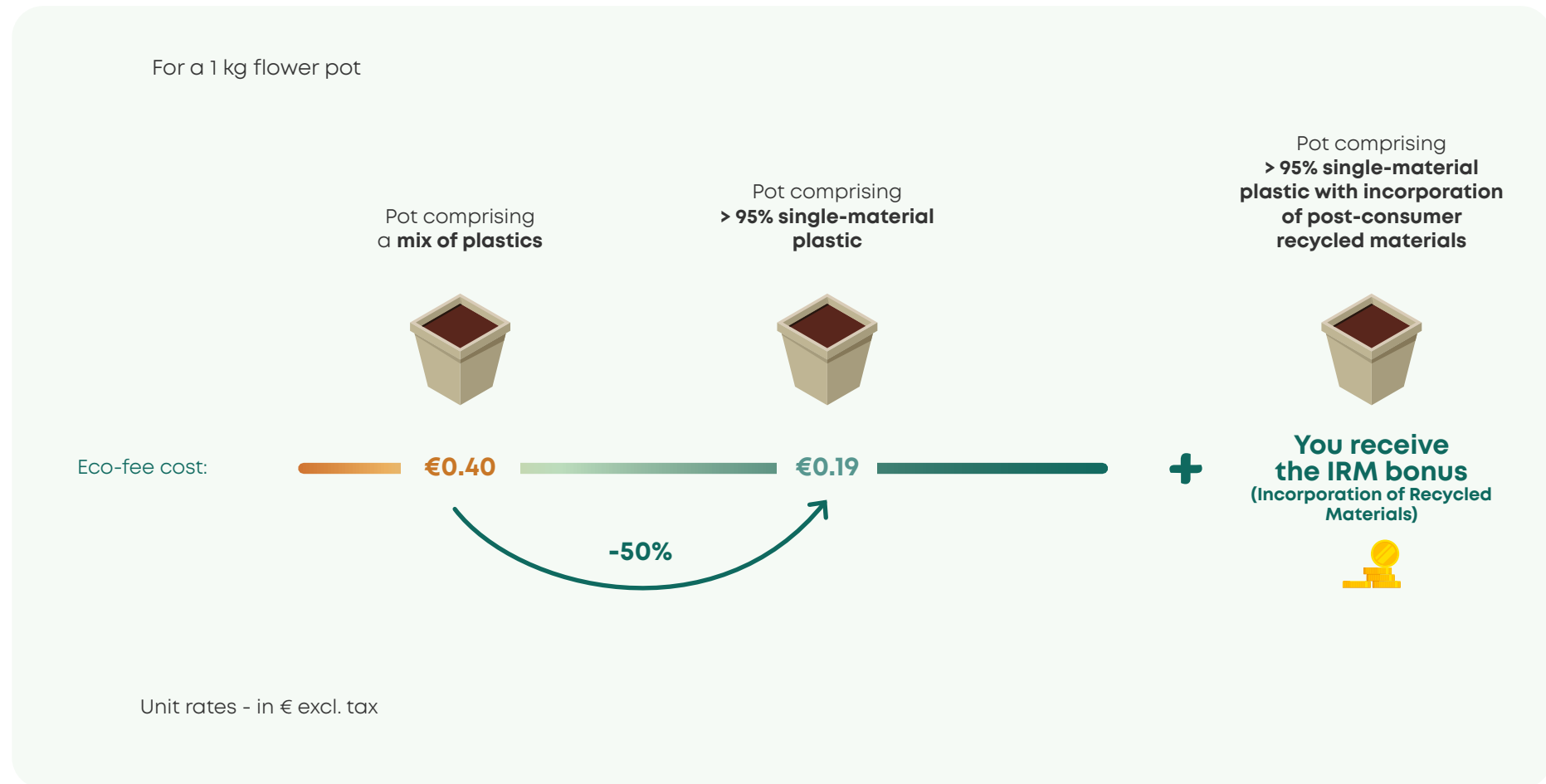
- **are exclusively sourced from end-of-life products** (post-consumer waste), from a holder listed with an approved eco-organisation in France;
- **do not contain** any substances that are hazardous or listed under REACH;
- reach a **set minimum threshold** (in %) of the product's material composition;
- fulfil the principle of proximity, meaning that the stages of collection, sorting, recycling and incorporation of **recycled materials are all carried out:**
 - within a 1,500 km radius of France's barycentre;
 - in an EU Member State.

These plastic products are not eligible if they:

- incorporate recycled plastic in a composite matrix, i.e. plastic resins associated with reinforcements forming a composite material with strengthened physical and mechanical properties;
- contain recycling disruptors identified by approved eco-organisations for the corresponding product category (2);
- contain less than 50% post-consumer recycled plastic incorporated into the finished product.

concrete example

Example of how the **eco-design efforts** proposed and rewarded by Ecomaison can improve your contribution.



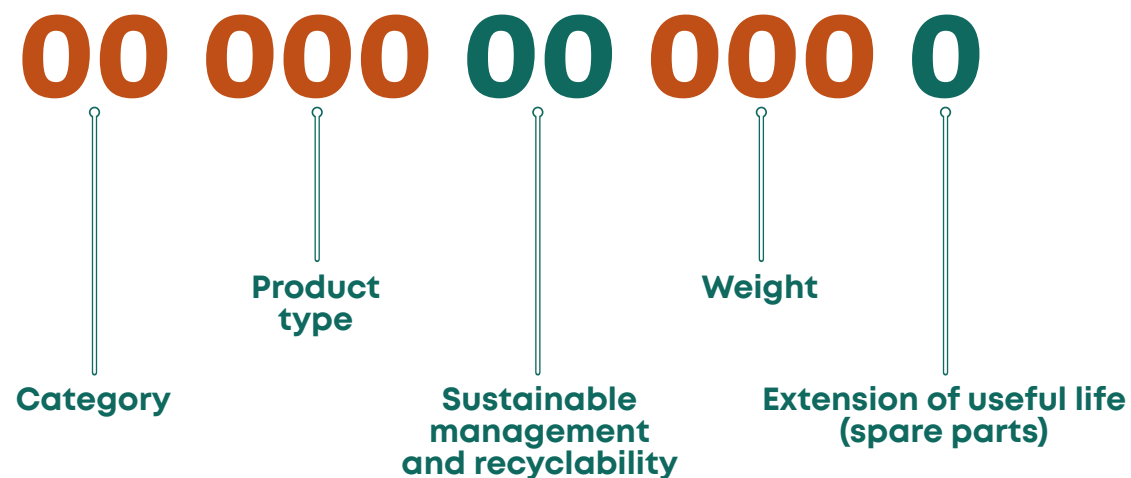
CODIFYING
my products



CODIFYING my products

ONE PRODUCT = ONE 11-DIGIT ITEM CODE

The item code allows you to apply the corresponding **eco-fee pricing scales** and to declare the launch of products subject to regulation.



NB:

Two codification methods have been adopted for DIY and gardening products:

- > **codifying by weight in euros/tonne** of marketed products;
- > **codifying by item** in order to determine an amount in accordance with the product's weight category.

Our [online solution](#) for **generating product codes and calculating the associated eco-fee**.



CONSULT OUR PRICING SCALES:

Item code and eco-fee generators are at your disposal.

- > [Pricing scales applicable as of 01/01/2026](#)
- > [Online item codification tool](#)

DECLARING my contribution

Your eco-fee must be declared to Ecomaison on a quarterly basis.

Ecomaison offers two types of declarations for companies whose market launches cover **fewer than 10,000 items per year⁽¹⁾**, **subject to a total marketed weight of under 15 tonnes:**



Declaration for codification

➤ The amount of your eco-fee is **based on product codes**.

All of your products with eco-modulated item codes are therefore listed.

Your eco-design efforts are taken into account and highlighted.



Flat-rate declaration

➤ You apply an annual fee per product category and per unit, without declaring the product weight or material, by using the appropriate code

Your administrative procedures are less complicated, but your eco-design efforts are not taken into account.

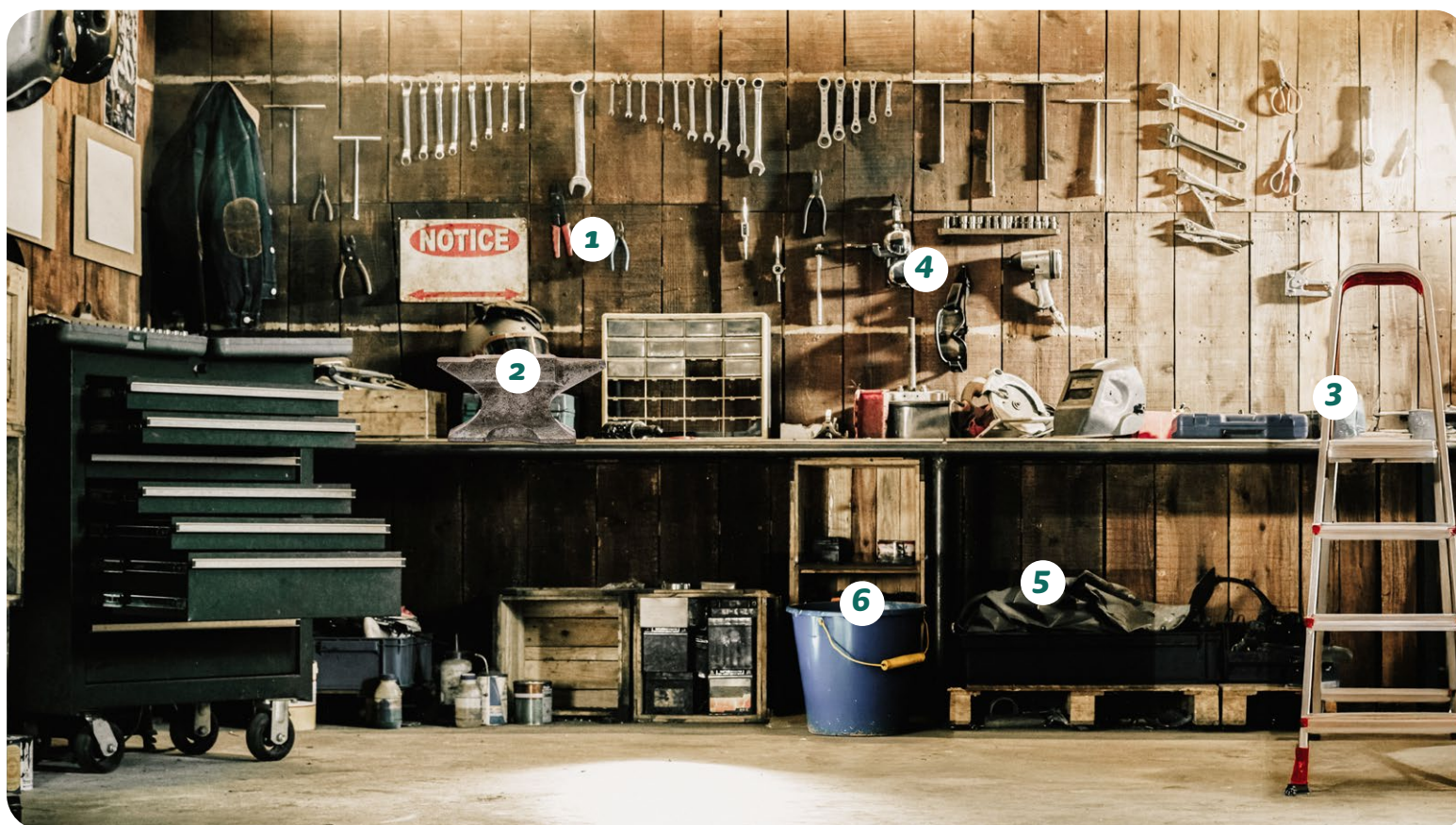
(1) Subject to a maximum unit weight of 10 kg and a total weight of less than 15 tonnes.

(2) This fee applies without declaration of the category, weight or material of these products.

A close-up photograph of various tools on a wooden workbench. In the foreground, a pair of silver pliers with green handles is prominent. To its left, a pair of yellow work gloves is visible. In the background, a screwdriver with a wooden handle and a pair of blue-handled scissors are partially visible. The tools are resting on a light-colored wooden surface. The text "KNOWING the rates for 2026" is overlaid on the image in a bold, sans-serif font. "KNOWING" is in orange, and "the rates for 2026" is in dark green.

KNOWING
the rates for 2026

RATES EXCL. TAXES in pictures



1 Hand tools - metal - 0.3 kg - €0.01

2 Anvil - metal - 1.5 kg - €0.02

3 Stepladder- metal - 6 kg - €0.07

4 Protective goggles - plastic assembly - 0.2 kg - €0.23

5 Tarpaulin for DIY - single-resin plastic - 0.8 kg - €0.27

6 Bucket - single-resin plastic - 0.45 kg - €0.09



DIY AND GARDENING PRODUCTS

Rates in €/tonne (excl. tax)

Category 3 – DIY

	SINGLE-MATERIAL (95%)		PRIMARY MATERIAL (> 50%)			SINGLE-MATERIAL (95%)		PRIMARY MATERIAL (> 50%)	MIXED MATERIALS/ OTHER ASSEMBLY OF MORE THAN 3 MATERIALS
	Inert materials > 95%	Ceramic > 95%	Metal	Uncertified wood	Certified wood ⁽¹⁾	Bio-based materials > 95%	Plastic > 95%	Bio-based materials, plastics and textiles > 50%	
Hand tools and accessories	€22.00	-	€22.00	€148.00	€74.00	€87.00	€270.00	€460.00	€460.00
Large non-electric, non-combustion items and machinery and accessories	€15.00	€15.00	€10.00	€28.00	€14.00	€44.00	€65.00	€135.00	€135.00
Tools and supports for working at height	€15.00	€15.00	€10.00	€28.00	€14.00	€44.00	€65.00	€135.00	€135.00
Personal protection equipment and accessories for DIY	€22.00	-	€22.00	€148.00	€74.00	€87.00	€270.00	€460.00	€460.00
Tarpaulins for DIY	-	-	-	-	-	€87.00	€270.00	€460.00	€460.00
Buckets, troughs and containers	€22.00	€22.00	€22.00	€70.00	€35.00	€87.00	€187.00	€395.00	€395.00

(1) Rate doubled for uncertified wood.

RATES EXCL. TAXES in pictures



1 Hand tools - metal - 0.3 kg - €0.01

2 Gardening gloves - synthetic textile - 0.3 kg - €0.23

3 Flower pot - inert materials - 4 kg - €0.11

4 Tarpaulin - single-resin plastic - 0.8 kg - €0.27

5 Planter - certified wood - 4 kg - €0.07

6 Non-masonry garden shed - certified wood - 300 kg - €3.00



DIY AND GARDENING PRODUCTS

Rates in €/tonne (excl. tax)

Category 4 – Gardening products

	SINGLE-MATERIAL (95%)		PRIMARY MATERIAL (> 50%)			SINGLE-MATERIAL (95%)		PRIMARY MATERIAL (> 50%)	MIXED MATERIALS/ OTHER ASSEMBLY OF MORE THAN 3 MATERIALS
	Inert materials > 95%	Ceramic > 95%	Metal	Uncertified wood	Certified wood ⁽¹⁾	Bio-based materials > 95%	Plastic > 95%	Bio-based materials, plastics and textiles > 50%	
Hand tools and accessories	€22.00	-	€22.00	€148.00	€74.00	€87.00	€270.00	€460.00	€460.00
Personal protection equipment and accessories for gardening	€22.00	-	€22.00	€148.00	€74.00	€87.00	€270.00	€460.00	€460.00
Flower pots and containers	€22.00	€22.00	€22.00	€70.00	€35.00	€87.00	€187.00	€395.00	€395.00
Tarpaulins, covers, films and nets	-	-	-	-	-	€87.00	€270.00	€460.00	€460.00
Outdoor equipment and accessories	€15.00	€15.00	€10.00	€28.00	€14.00	€44.00	€65.00	€135.00	€135.00
Non-masonry outdoor structures	€15.00	€15.00	€10.00	€28.00	€14.00	€44.00	€65.00	€135.00	€135.00

(1) Rate doubled for uncertified wood.

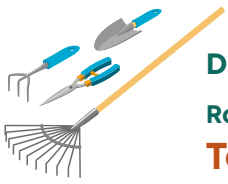


DIY AND GARDENING PRODUCTS

Rates in €/tonne (excl. tax)

Large items, supports for working at height, outdoor equipment and structures

	SINGLE-MATERIAL (95%)		PRIMARY MATERIAL (> 50%)		SINGLE-MATERIAL (95%)		PRIMARY MATERIAL (> 50%)	Mixed materials/ Assembly of more than 3 materials with no primary material (excl. column E items) or composites or unspecified
	Inert materials excl. ceramic	Ceramic	Metal	Certified wood or Wood + Metal	Non-synthetic textile or bio-based materials (cardboard, paper, linen, hemp, etc.)	Synthetic textile, polymer or single-resin plastic	Synthetic textile or plastic	
< 0.5 kg	€0.01	€0.01	€0.01	€0.01	€0.02	€0.03	€0.07	€0.07
≥ 0.5 kg and < 1 kg	€0.02	€0.02	€0.01	€0.01	€0.04	€0.07	€0.14	€0.14
≥ 1 kg and < 2 kg	€0.03	€0.03	€0.02	€0.03	€0.09	€0.13	€0.27	€0.27
≥ 2 kg and < 3 kg	€0.05	€0.05	€0.03	€0.04	€0.13	€0.20	€0.41	€0.41
≥ 3 kg and < 5 kg	€0.08	€0.08	€0.05	0.07	€0.22	€0.33	€0.68	€0.68
≥ 5 kg and < 7 kg	€0.11	€0.11	€0.07	€0.10	€0.31	€0.46	€0.95	€0.95
≥ 7 kg and < 10 kg	€0.15	€0.15	€0.10	€0.14	€0.44	€0.65	€1.35	€1.35
≥ 10 kg and < 15 kg	€0.23	€0.23	€0.15	€0.21	€0.66	€0.98	€2.03	€2.03
≥ 15 kg and < 20 kg	€0.30	€0.30	€0.20	€0.28	€0.88	€1.30	€2.70	€2.70
≥ 20 kg and < 25 kg	€0.38	€0.38	€0.25	€0.35	€1.10	€1.63	€3.38	€3.38
≥ 25 kg and < 30 kg	€0.45	€0.45	€0.30	€0.42	€1.32	€1.95	€4.05	€4.05
≥ 30 kg and < 40 kg	€0.60	€0.60	€0.40	€0.56	€1.76	€2.60	€5.40	€5.40
≥ 40 kg and < 50 kg	€0.75	€0.75	€0.50	€0.70	€2.20	€3.25	€6.75	€6.75



DIY AND GARDENING PRODUCTS

Rates in €/tonne (excl. tax)

Tools, tarpaulins and protective equipment

	SINGLE-MATERIAL (95%)		PRIMARY MATERIAL (> 50%)		SINGLE-MATERIAL (95%)		PRIMARY MATERIAL (> 50%)	Mixed materials/ Assembly of more than 3 materials with no primary material (excl. column E items) or composites or unspecified
	Inert materials excl. ceramic	Ceramic	Metal	Certified wood or Wood + Metal	Non-synthetic textile or bio-based materials (cardboard, paper, linen, hemp, etc.)	Synthetic textile, polymer or single-resin plastic	Synthetic textile or plastic	
< 0.5 kg	€0.01	-	€0.01	€0.04	€0.04	€0.14	€0.23	€0.23
≥ 0.5 kg and < 1 kg	€0.02	-	€0.02	€0.07	€0.09	€0.27	€0.46	€0.46
≥ 1 kg and < 2 kg	€0.04	-	€0.04	€0.15	€0.17	€0.54	€0.92	€0.92
≥ 2 kg and < 3 kg	€0.07	-	€0.07	€0.22	€0.26	€0.81	€1.38	€1.38
≥ 3 kg and < 5 kg	€0.11	-	€0.11	€0.37	€0.44	€1.35	€2.30	€2.30
≥ 5 kg and < 7 kg	€0.15	-	€0.15	€0.52	€0.61	€1.89	€3.22	€3.22



Flower pots and containers

	SINGLE-MATERIAL (95%)		PRIMARY MATERIAL (> 50%)		SINGLE-MATERIAL (95%)		PRIMARY MATERIAL (> 50%)	Mixed materials/ Assembly of more than 3 materials with no primary material (excl. column E items) or composites or unspecified
	Inert materials excl. ceramic	Ceramic	Metal	Certified wood or Wood + Metal	Non-synthetic textile or bio-based materials (cardboard, paper, linen, hemp, etc.)	Synthetic textile, polymer or single-resin plastic	Synthetic textile or plastic	
< 0.5 kg	€0.01	€0.01	€0.01	€0.02	€0.04	€0.09	€0.20	€0.20
≥ 0.5 kg and < 1 kg	€0.02	€0.02	€0.02	€0.04	€0.09	€0.19	€0.40	€0.40
≥ 1 kg and < 2 kg	€0.04	€0.04	€0.04	€0.07	€0.17	€0.37	€0.79	€0.79
≥ 2 kg and < 3 kg	€0.07	€0.07	€0.07	€0.11	€0.26	€0.56	€1.19	€1.19
≥ 3 kg and < 5 kg	€0.11	€0.11	€0.11	€0.18	€0.44	€0.94	€1.98	€1.98
≥ 5 kg and < 7 kg	€0.15	€0.15	€0.15	€0.25	€0.61	€1.31	€2.77	€2.77
≥ 7 kg and < 10 kg	€0.22	€0.22	€0.22	€0.35	€0.87	€1.87	€3.95	€3.95
≥ 10 kg and < 15 kg	€0.33	€0.33	€0.33	€0.53	€1.31	€2.81	€5.93	€5.93
≥ 15 kg and < 20 kg	€0.44	€0.44	€0.44	€0.70	€1.74	€3.74	€7.90	€7.90



DIY AND GARDENING PRODUCTS

Rates in €/tonne (excl. tax)

Simplified codification

ECO-FEES BY UNIT	RATE PER UNIT	CODE
Cat. 3 – DIY		
1. Hand tools and accessories	€0.35	2110000890
2. Large non-electric, non-combustion items and machinery and accessories	€2.36	21101000890
3. Tools and supports for working at height	€1.70	21102000890
4. Personal protection equipment and accessories for DIY	€0.12	21103000890
5. Tarpaulins for DIY	€1.84	21104000890
6. Buckets, troughs and containers	€0.10	21105000890

ECO-FEES BY UNIT	RATE PER UNIT	CODE
Cat. 4 – Garden upkeep and landscaping		
7. Garden upkeep hand tools	€0.70	22150000890
8. Personal protection equipment for gardening	€0.70	22151000890
9. Flower pots and containers	€1.00	22152000890
10. Tarpaulins, covers, films and nets	€0.70	22153000890
11. Outdoor equipment	€1.15	22154000890
12. Non-masonry outdoor structures	€1.70	22155000890

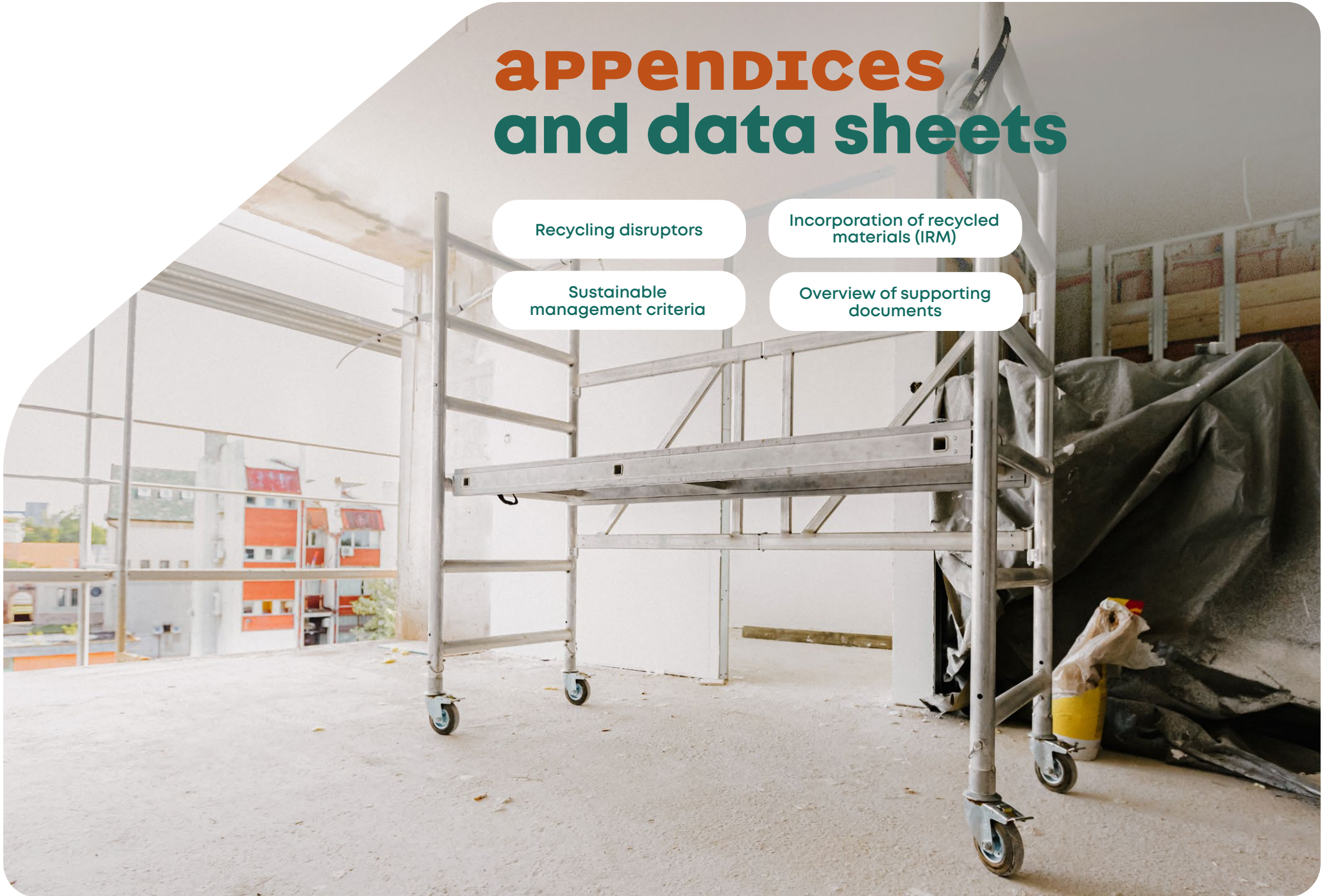
APPENDICES and data sheets

Recycling disruptors

Incorporation of recycled
materials (IRM)

Sustainable
management criteria

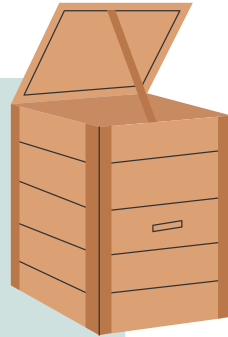
Overview of supporting
documents



RECYCLABLE materials

WOOD AND DERIVATIVES

- Assembly whose combined composition of wood, wood derivatives and metal exceeds 90%.
- Wood derivatives >90%.
- Solid and equivalents >75%.
- Certified solid and equivalents >75%.
- Chipboard or OSB >75%.
- Certified chipboard or OSB >75%.



METALS

- Assembly with >50% metal and other materials.
- Metal >90%.



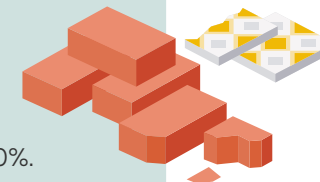
PLASTICS

- ABS >90%.
- PE or PP or PP/PE mixture >90%.
- Plastics (mono-resin) >90%.
- Plastics or other synthetic materials >50%.
- Polystyrene >90%.
- Polyethylene terephthalate (PET) >90%.
- PVC >90%.



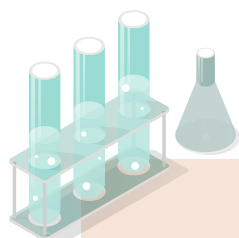
MINERAL AND INERT SINGLE MATERIALS

- Slate >90%.
- Concrete >90%.
- Ceramic >90%.
- Cement >90%.
- Granite >90%.
- Sandstone >90%.
- Volcanic rock >90%.
- Artificial stone >90%.
- Limestone >90%.
- Terracotta or raw earth >90%.
- Glass >90%.



RECYCLING disruptors

These are elements or materials that prevent recycling.
There are 2 categories:

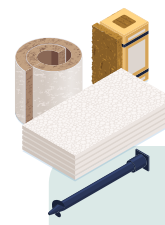


Chemical disruptors

Hazardous substances within the meaning of the AGEC Act (Art. 13), i.e.:

- › Substances of “**very high concern**” within the meaning of the European REACH regulation, in a concentration above 0.1% weight by weight.
- › Substances listed under Annex XVII to REACH in **quantities exceeding the established limit**.
- › **Substances** subject to **the POPs regulation** (Appendix 4).

[READ MORE](#)



Physical disruptors

- › Materials or assembly methods that **do not allow the extraction of materials** or that **compromise the quality of the flow to be recycled**.



WE PROVIDE TOOLS:

Discover the list of disruptors to assess the recyclability of your products using the [Ecomaison tool](#).

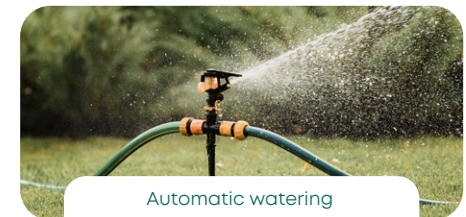


DISRUPTORS to the recycling of DIY and Gardening Products



RECYCLING DISRUPTOR	FACTORS THAT DISRUPT RECYCLABILITY (Wood and derivatives, metals, foam, spring and latex, paper, cardboard, plastics)
Disruptive chemicals (SVHCs)*	Brominated flame retardants (PBDE, HBCD), adhesives containing solvents or epoxy resins, chemical surface treatments... in all DIY and gardening product families.
Integrated electrical/ electronic components that are difficult to separate using standard user tools	LEDs, motors or sensors integrated into DIY or gardening products whose main material is recyclable. Examples: automatic watering, electrical DIY products.
Included inert mineral materials that are difficult to separate using standard user tools	Inert materials and minerals firmly incorporated into gardening products made of metals/wood or derivatives (recyclable materials). Example: parasol stand.

NON-EXHAUSTIVE PRODUCT EXAMPLES



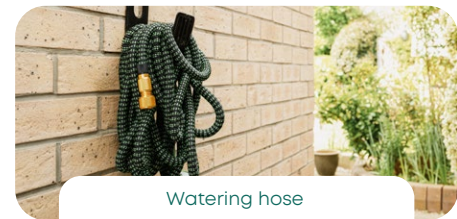
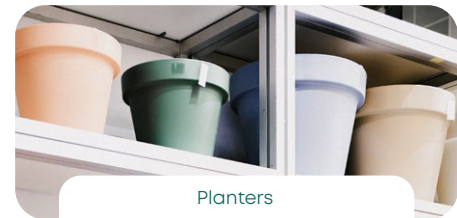
*SVHC (Substance of Very High Concern) within the meaning of the European REACH regulation.

DISRUPTORS to the recycling of DIY and Gardening Products



RECYCLING DISRUPTOR	FACTORS THAT DISRUPT RECYCLABILITY (Wood and derivatives, metals, foam, spring and latex, paper, cardboard, plastics)
<p>High mineral filler content (>40% fillers weight by weight)</p>	<p>Mineral fillers incorporated to >40% by weight of the product for reasons of stiffness, stability or fire resistance in DIY or gardening products whose main material is recyclable: plastic resins, wood and wood derivatives, etc. Example: planters.</p>
<p>Complex polymers (cross-linked, woven, reinforced, composite)</p>	<p>The components of a furnishing element of which the polymers are cross-linked, woven or reinforced to impart specific properties to the products. Example: garden furniture with seats made of reinforced polymers.</p>

NON-EXHAUSTIVE PRODUCT EXAMPLES



STATEMENT OF PRESENCE of hazardous substances

The obligation to display information on the presence of a hazardous substance applies when it is present in concentrations above 0.1% weight by weight in a substance, mixture or item, within the meaning of points 1, 2 and 3 of Article 3 of Regulation (EC) No. 1907/2006 known as REACH, as supplemented and updated by order of the Minister for the Environment.

Information on hazardous substances
can be displayed via:

- The product sheet.
- The Scan4Chem application.
This app is financed by the European Commission as part of the LIFE programme, in which France is actively involved through the French National Institute for Industrial Environment and Risks (INERIS).

The statement to be
displayed is as follows:

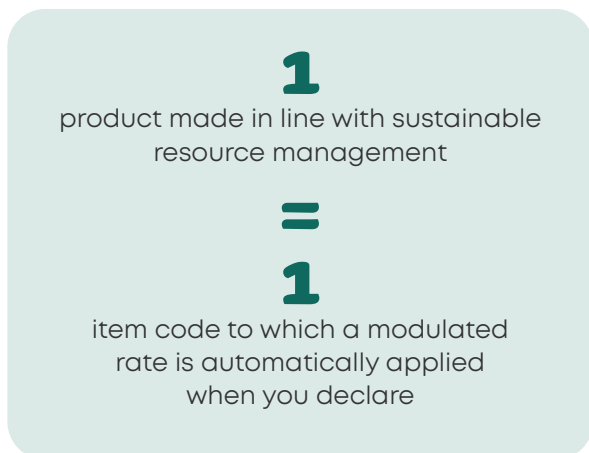
CONTAINS A HAZARDOUS SUBSTANCE

OR

**CONTAINS A SUBSTANCE
OF VERY HIGH CONCERN**

The statement is supplemented by the name
of each hazardous substance present.

Renewable Resources sustainable management criterion



CONDITION:

This “**Sustainable Management**” rate is applied in the absence of physical or chemical recycling disruptors, a list of which can be found via our [recyclability analysis tool](#).



Renewable Resources sustainable management criterion

SUSTAINABLE MANAGEMENT - WOOD

The “Sustainable Management - Wood” rate is applicable in accordance with the following conditions:



Solid wood and similar products

Minimum “Sustainable Management” wood content in the product:

DIY & gardening: **50%**

Material

“Sustainable management” wood, i.e. derived from sustainably managed forests and certified:

- PEFC, FSC;
- or under any equivalent due diligence system



Paper, cardboard and chipboard products

Minimum “Sustainable Management” wood content in the product:

DIY & gardening: **50%**

Material

“Sustainable management” wood, i.e. derived from sustainably managed resources and certified:

- PEFC, PEFC Recycled, FSC Mix, FSC Recycled;
- or under any equivalent due diligence system

Labels & Certification



or equivalent

These labels and certifications are accepted to indicate the resource's sustainable management.

IRM application criteria

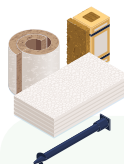
Three conditions must be fulfilled to benefit from the bonus related to the incorporation of recycled materials:



Sources

The recycled material comes exclusively from post-consumer waste, i.e. end-of-life products.

- It must: come from a holder/operator listed by a government-approved eco-organisation as part of the EPR strategy;
- have been collected, sorted, recycled and incorporated within 1,500 km of France's barycentre and/or in an EU Member State.



Quality

The recycled material must not compromise the future recyclability of the manufactured product.

It must not contain recycling disruptors beyond the established thresholds.



Quantity

Bonuses and eco-modulations are calculated according to the quantities of post-consumer recycled materials incorporated into the material making up the finished product.

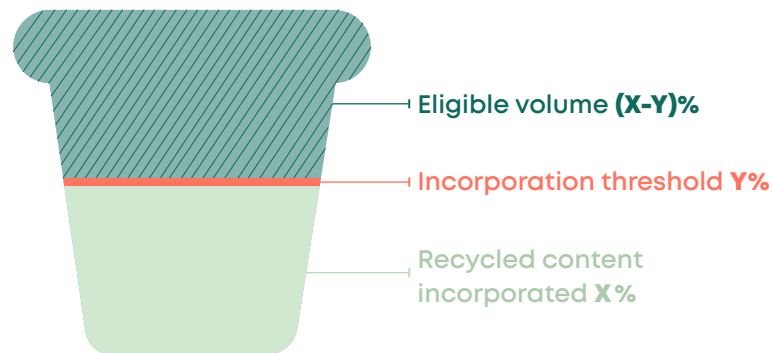
IRM application criteria

ELIGIBLE VOLUME MINIMUM THRESHOLD

Bonuses are **calculated for the quantities of post-consumer recycled waste incorporated** into the material making up the finished product, for all tonnes exceeding a minimum incorporation threshold.

How to find out if my product is eligible

Material **making up the product:**



If the content of post-consumer recycled material incorporated (X%) is greater than the threshold (Y%), the IRM bonus is applicable over and above the threshold, i.e. at (X-Y)%. Otherwise, the bonus shall not apply.



*NB: the minimum threshold of post-consumer recycled plastic incorporated (by materials or products) is 70%.

IRM BONUS application criteria

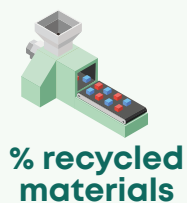
IRM bonus calculation



The bonus calculation takes into account the quantity of products (in tonnes) eligible for the bonus according to your declaration and trigger thresholds.



x



=



Your bonus is then calculated based on the amounts of Ecomaison's IRM bonus.



x





=



At the end of each financial year N, during the 1st quarter of N+1, the bonuses are calculated, resulting in a payout*.

* As of Q3 2026. The incorporation of recycled materials in the second half of 2025 will be closed in the first half of 2026.

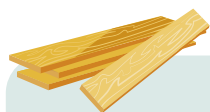
OVERVIEW OF SUPPORTING DOCUMENTS for eco-modulations

	 ECO-MODULATION	 BONUS · IRM
APPLICATION RULES	Upon declaration → Rates via the different codes	Upon declaration → Specific calculation and payment of a certain amount
SUPPORTING DOCUMENTS	<p>Sustainable renewable resource management Sworn statement to be completed in the “Services” space Supporting documents to keep available in the event of an inspection (by way of example, non-exhaustive list): transaction documents: purchase invoices and/or delivery notes, recognised certificates and/or transaction certificates, detailed product data sheets (including composition details)</p> <p>Recyclability Use of the “Recyclability” tool Supporting documents</p> <p>Extension of useful life Schedule of declaration to be completed in the “Services” spaces and Supporting documents to be uploaded to the “Services” space</p>	<p>Documents to be forwarded → LNE incorporation certificates part 2: the certification must state the ratio/tonnage of post-consumer recycled raw material (RPM) by origin, as this is the only parameter taken into account (provided by the manufacturers).</p> <p>→ RecyClass certificates (provided by the regenerators): the certificate must state the ratio/tonnage of post-consumer RPM, as this is the only parameter taken into account.</p>

eco-MODULATION supporting documents

SUSTAINABLE RENEWABLE RESOURCE MANAGEMENT

Supporting documents will vary depending on the material. You must then **complete a sworn statement in the Ecomaison “Services” space** concerning the possession of the supporting documents listed below.



Wood

- **Product or building material labels and certifications**, according to the principles of the control chain for the labels and certifications concerned: PEFC, PEFC Recycled, FSC Mix or FSC Recycled.
- Or **any equivalent due diligence system** ensuring that the products come from sustainably managed forests and recycled and/or controlled sources.



eco-MODULATION supporting documents

RECYCLABILITY

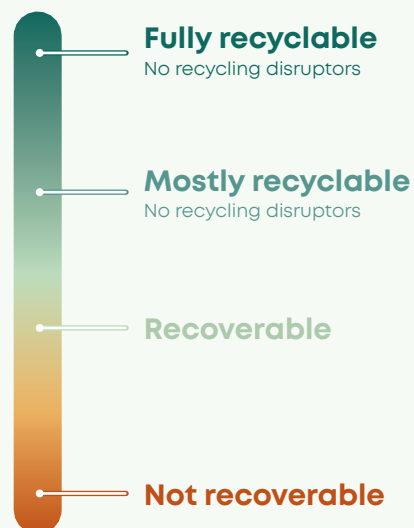
Documents do not need to be uploaded to the Ecomaison “Services” space.

The supporting documents are available in the event of an inspection by Ecomaison:

- › **Product sheets** stating the full composition of the product with the amounts of any hazardous materials and substances.
- › **Results available in the [Ecomaison tool](#)** for recyclability analysis.



4 recyclability levels



eco-MODULATION supporting documents

EXTENSION OF USEFUL LIFE

	Spare parts and repairability
<p>DECLARATION APPENDIX: Available in the “Services” space Information to be filled out</p>	<ul style="list-style-type: none"> • Product references and Ecomaison codes • Provision date • Date of end of commercialisation (presumed, by default, to be 31 December N+2 for toys and N+5 for DIY & gardening products)
<p>SUPPORTING DOCUMENTS: To be uploaded to the “Services” space</p>	<ul style="list-style-type: none"> • Supporting document providing proof of spare part availability, such as: BOM – Bill of Materials/ parts list and/or exploded-view drawing and/or instruction manual





ecomaison

**For any questions,
please CONTACT US AT:**

contact@ecomaison.com

Follow our news and events on
ecomaison.com/en
and on our **LinkedIn page**



Ecomaison – SAS with share capital of €291,000 - Registered office: 50 avenue Daumesnil, 75012 Paris - 538 495 870
RCS Paris Photo credits: Shutterstock - Layout: makassar - September 2025