



ecomaison

# **2026 PRICE GUIDE**

## **Meet your obligations and manage your eco-fee via eco-design**

**GAMES &  
TOYS**

**APPLICABLE FROM 1<sup>ST</sup> JANUARY 2026**  
VERSION DATED MARCH 2026



# CONTENTS

**P.4**

**WHAT HAPPENS TO  
my eco-fee?**

**P.6**

**CALCULATING  
my eco-fee  
and IMPROVING  
my environmental  
performance**

**P.13**

**CODIFYING  
my products**

**P.16**

**KNOWING  
the rates for 2026**

**P.22**

**APPENDICES  
and data sheets**

# PRODUCTS concerned

## CATEGORY 1

Toys, as defined in Article 2 of French Decree No. 1010-166 of 22 February 2010 on toy safety:



Outdoor games



Indoor games  
(doll, teddy,  
construction sets,  
action games, etc.)



Board games  
(for under 14s)  
and puzzles  
(less than 500 pieces)



Free toys  
(toy distributed  
free of charge  
to the consumer)

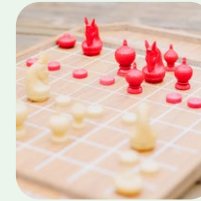
## CATEGORY 2



Models



Puzzles  
(over 500 pieces)



Board games  
(for over 14s)



### SPECIFIC PROVISIONS FOR PAPER/ PACKAGING EPR

Board game boxes are game items and are therefore covered by toy sector ERP.

For more information, see [guidance document No.12 to Directive 2009/48/EC](#).



### The following are excluded from the regulatory scope:

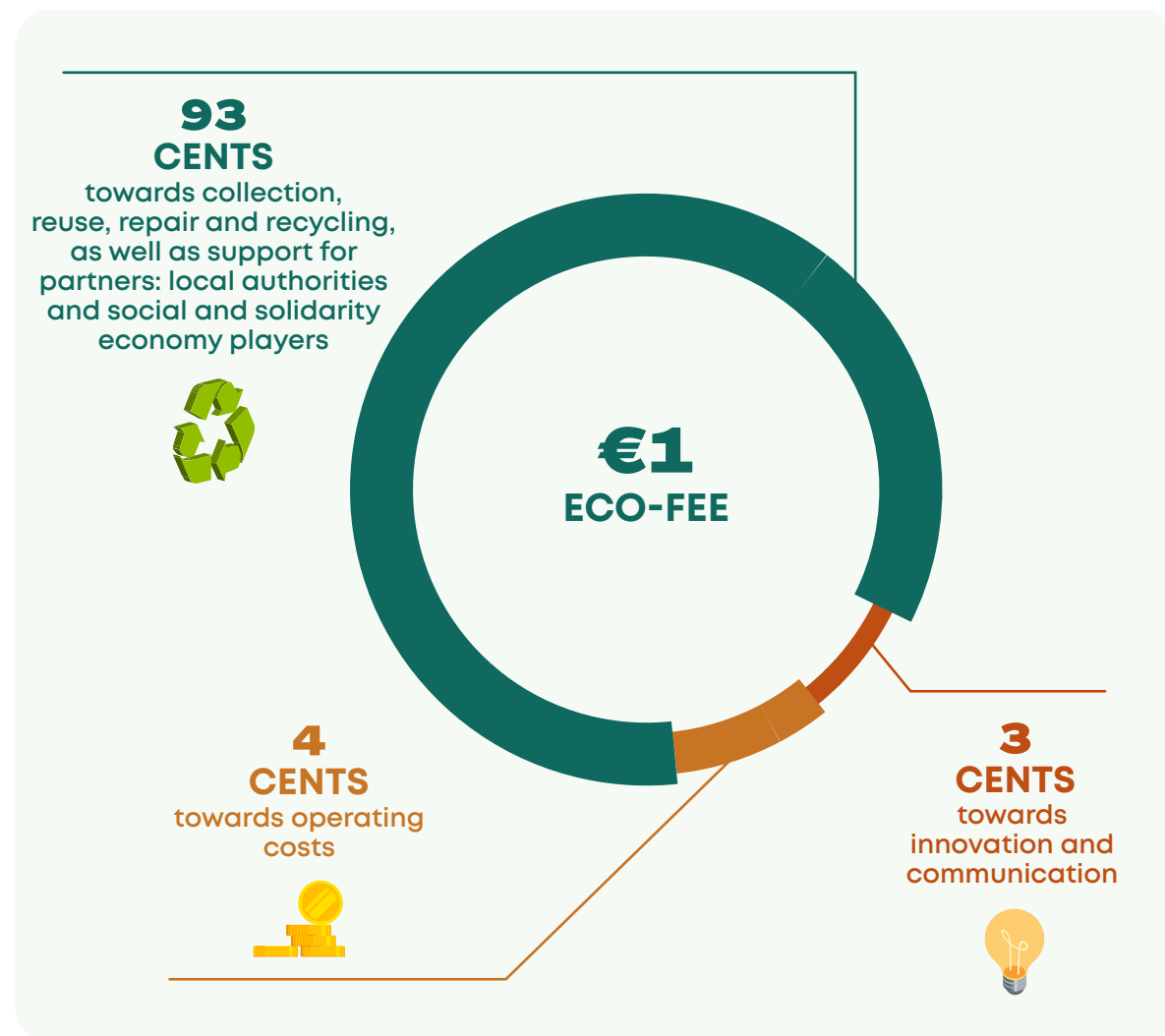
- > Toys classified as electrical and electronic equipment (WEEE EPR).
- > Writing and drawing implements.
- > Pet toys.
- > Sports and leisure equipment covered by EPR for sports and leisure equipment.
- > Children's furniture and textile decoration covered by EPR for furnishings.

# WHAT HAPPENS TO my eco-fee?



# WHAT HAPPENS TO my eco-fee?

The eco-fee allows Ecomaison to organise and **fund the collection** of building and housing products and materials, as well as **the repair, reuse and recycling** of sorted products.



Source: key figures 2024

## PRICING IS CALCULATED BASED ON 3 CRITERIA:

### › Product features

The rate depends on the product type, weight, materials used and the product's recyclability or recycling disruptors.

### › Management costs

The rate reflects the real costs of the sector, including product collection, sorting, transportation and processing. The smaller the object, the more logistics required to collect it, resulting in higher costs.

### › Eco-modulations

Bonuses and penalties may apply depending on eco-design criteria (extension of useful life, incorporation of recycled materials, recycling disruptors, etc.).

# Calculating my eco-fee and Improving my environmental performance

All the info on eco-modulations

Rewarding my commitment



# what are eco-MODULATIONS?

- › Eco-modulations are a scheme provided by Ecomaison to **reward the circular efforts** of our most virtuous members.
- › By sourcing raw materials from renewable or recycled resources, extending product useful life and implementing a circular purchasing policy, you can **improve your eco-fee and/or benefit from bonuses**.
- › By adopting these practices, you can optimise your obligations, **make your business more circular and drive your industry's performance**.

## My Ecomaison invoice

	<b>Total</b>
Eco-fee for initial market launch on French territory (new or second-hand) <b>I owe Ecomaison</b>	<b>€A</b>
Reduction of eco-fee due to eco-modulations	<b>€B</b>
<b>My total eco-fee</b>	<b>A-B = €C</b>
Bonuses for incorporating recycled materials <b>Ecomaison owes me</b>	<b>€D</b>
<b>MY TOTAL CONTRIBUTION PAID</b>	<b>C-D = €E</b>

## How can I improve my contribution?



Sustainable management

Recyclability

Extension of useful life  
Provision of spare parts



Incorporation of recycled materials (IRM)

# SUSTAINABLE resource management

The sustainable product management criterion relates to the material of which the product is made.

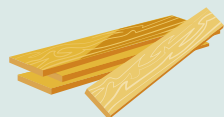
Sustainable management means that:

- › the product meets a minimum threshold concerning the amount of its materials sourced from **sustainably managed resources**;
- › the products or their constituent materials are **certified** or carry a corresponding label.



\*NB: the sustainable management bonus is subject to the absence of recycling disruptors.

## Eligible materials:



Wood



Bio-based materials  
(paper, cardboard)



### WE PROVIDE TOOLS:

To view the list of recycling disruptors, see the [dedicated page](#) (in French only).



### WE PROVIDE SUPPORT:

The item code incorporates eco-modulation for sustainable management.

**It's easy!**

# RECYCLABILITY

The recyclability of a product is established according to **5 cumulative criteria** depending on either the sector (eco-organisation's responsibility) or the product (manufacturer's responsibility) (according to [Article 13 of the AGECL Law](#)):



Sector dependent

## 1

The possibility of efficient **collection** on a regional scale via public access to local collection points.

## 2

The possibility of **sorting**, i.e. being directed to recycling channels to be recycled.

## 3

**The absence** of elements or substances in the material, product or packaging that **disrupt sorting** or recycling, or limit the use of the recycled material.



Product dependent

## 4

The product is recyclable only if, after treatment, **at least 50% of its initial mass can actually become a usable material again.**



Sector dependent

## 5

The possibility of **recycling on an industrial scale** and in practice, in particular through a guarantee that the quality of the recycled material obtained is sufficient to guarantee **long-term use and that the recycling sector** can demonstrate a good **capacity to handle** the products that can be integrated into it.



### WE PROVIDE TOOLS:

Discover the [list of disruptors](#).

To support your eco-design efforts, Ecomaison has designed a [material recyclability scale](#).



# LEVELS of recyclability

Your product's recyclability depends on its constituent materials.

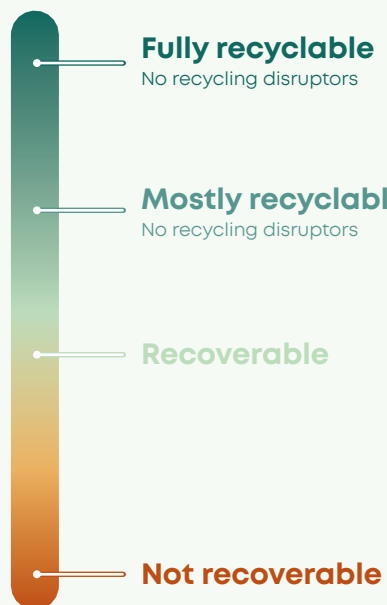
To benefit from this eco-modulation, you must take into account the materials used during the manufacture of the product.

A product composed mainly of materials, wood, metal or mono-resin plastics will entitle you to a **lower eco-fee, as it is more easily recyclable** than a product made from a combination of materials or multiple resins.



\*NB: the recyclability bonus is subject to the absence of non-sustainable materials and recycling disruptors.

## 4 Ecomaison recyclability levels



### WE PROVIDE SUPPORT:

The item code incorporates the eco-modulation for recyclability  
**It's easy!**



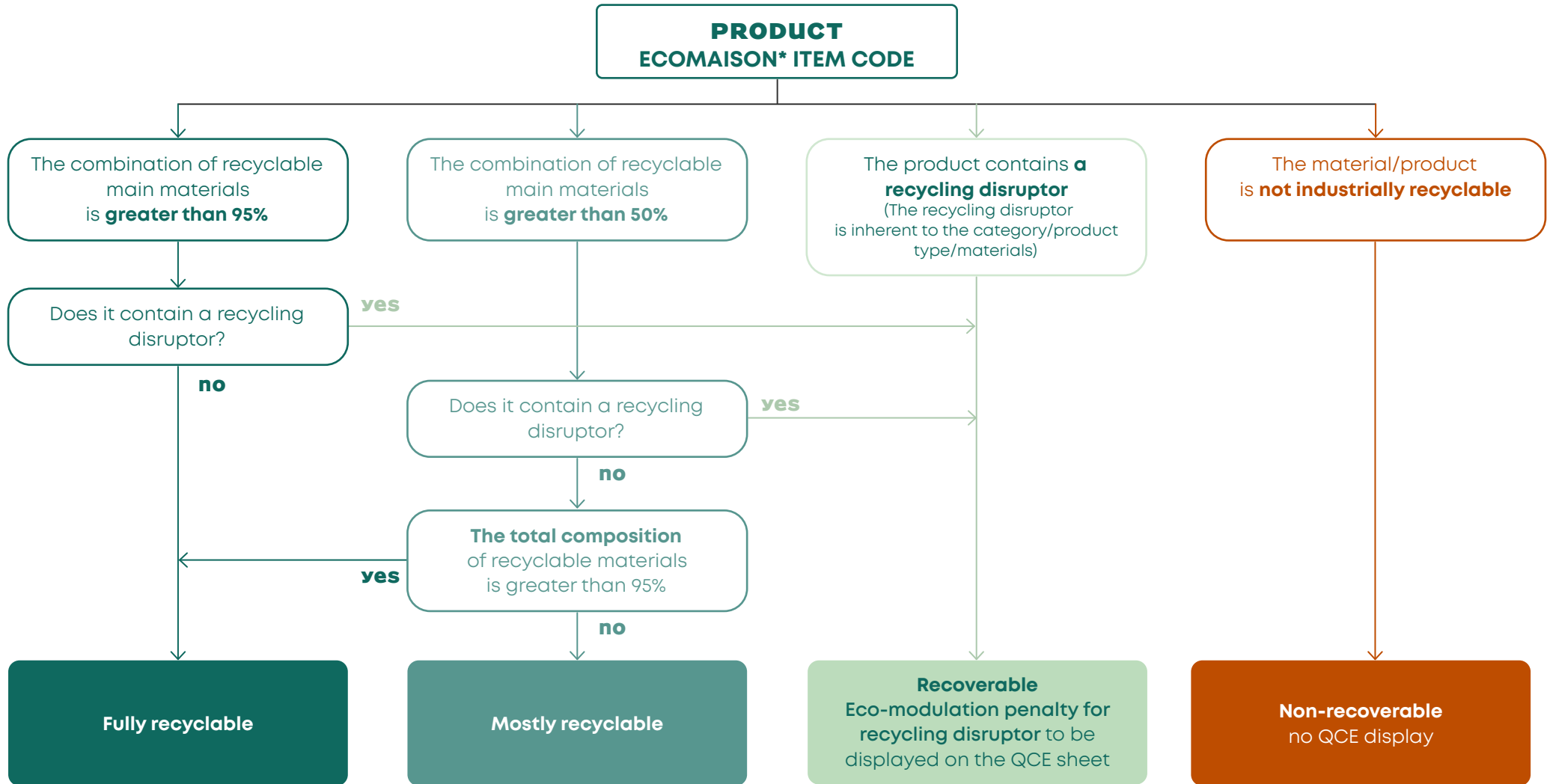
### TO FIND OUT

the recyclability of the products you launch onto the market, head to the corresponding [on the dedicated page](#).

To view the list of recyclable materials, consult [the technical data sheet](#).

# DEFINITION OF the level of recyclability

To help you determine the recyclability of your products, **Ecomaison provides a calculation tool** based on eco-fee codification according to the following reasoning:



**\*The Ecomaison item code contains the following information:**

- Product category;
- Type;
- Main material;
- Product weight.

# RECYCLABILITY LEVELS for Toys



— **Metal** > 95%

— **Wood, paperboard through certified sustainable management, PP, PE & mixed PP-PE** > 95%

— **Metal** > 50%

— **Paperboard, wood, PP, PE, mixed PP-PE** > 50%

— **Other plastics** > 50%

— **Other materials** > 50%

— **No main material**



# PROVISION of spare parts

This eco-modulation rewards the **provision of spare parts by the marketer** (manufacturer or distributor) to the consumer on request:

- › inherent to the main function of the product (excluding accessories);
- › available even after the final marketing of the product (for a duration of 2 years for toys).



\*NB: the recyclability bonus is subject to the absence of recycling disruptors.



## WE PROVIDE SUPPORT:

The declaration code includes the eco-modulation for extending the useful life.

### It's easy!

Eco-modulated codes for spare parts end with the number 1.

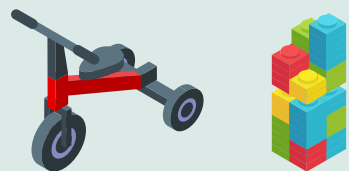


# INCORPORATION of recycled materials (IRM)

Ecomaison rewards you for **incorporating recycled raw materials** into a product launched on the market<sup>(1)</sup>.

This reward is calculated based on the amount of recycled materials incorporated into your product.

This concerns products containing the following materials<sup>(2)</sup>:



Plastics

(1) A breakdown by material can be found in the [data sheets](#).

(2) The technical details of the materials concerned, recycling disruptors, minimum incorporation thresholds and the [list of hazardous or REACH-classified substances](#) can be found in the fact sheets included in the appendices.



\*NB: the minimum thresholds of post-consumer recycled materials incorporated (by materials or products) are indicated in the [data sheets](#) appended to the price guide.

**These materials  
are eligible if they:**

- **are exclusively sourced from end-of-life products** (post-consumer waste), from a holder listed with an approved eco-organisation in France;
- **do not contain** any substances that are hazardous or listed under REACH;
- reach a **set minimum threshold** (in %) of the product's material composition;
- fulfil the principle of proximity, meaning that the stages of collection, sorting, recycling and incorporation of **recycled materials are all carried out:**
  - within a 1,500 km radius of France's barycentre;
  - in an EU Member State.

**These plastic products  
are not eligible if they:**

- incorporate recycled plastic in a composite matrix, i.e. plastic resins associated with reinforcements forming a composite material with strengthened physical and mechanical properties;
- contain recycling disruptors identified by approved eco-organisations for the corresponding product category (2);
- contain less than 50% post-consumer recycled plastic incorporated into the finished product.

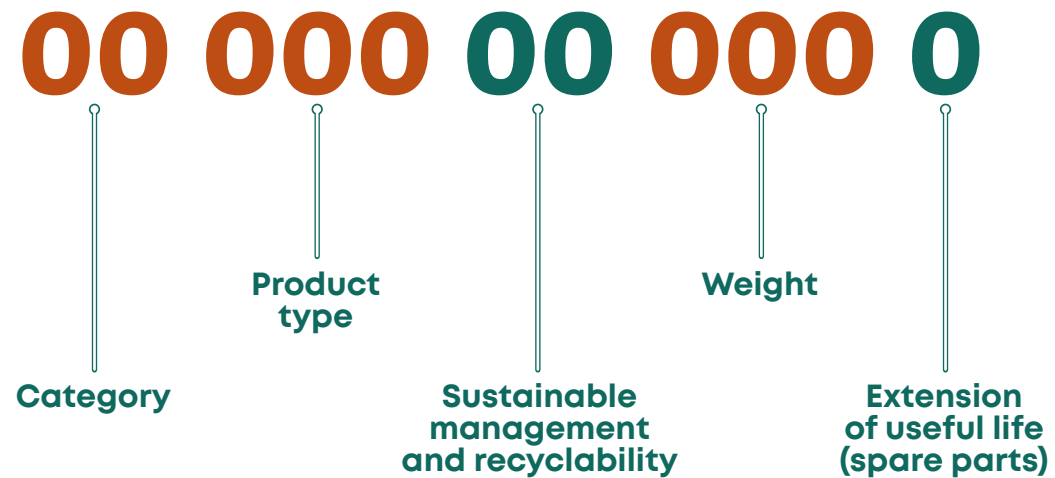
# **CODIFYING** **my products**



# CODIFYING my products

ONE PRODUCT = ONE 11-DIGIT ITEM CODE

The item code allows you to apply the corresponding eco-fee pricing scales and to declare the launch of products subject to regulation.



**CONSULT OUR PRICING SCALES:**

Item code and eco-fee generators are at your disposal.

> [Pricing scales applicable as of 01/01/2026](#)

# DECLARING my contribution

Your eco-fee must be declared to Ecomaison on a quarterly basis.

Ecomaison offers two types of declarations for companies whose market launches cover **fewer than 15,000 items per year<sup>(1)</sup>**:



## Declaration for codification



The amount of your eco-fee is **based on product codes**.

All of your products with eco-modulated item codes are therefore listed.

**Your eco-design efforts are taken into account and highlighted.**



## Flat-rate declaration



You apply an annual fee of €22 per 100 items<sup>(2)</sup> using the appropriate code: 31208120910.

Your administrative procedures are less complicated, but your eco-design efforts are not taken into account.

(1) Subject to a maximum unit weight of 10 kg and a total weight of less than 15 tonnes.

(2) This fee applies without declaration of the category, weight or material of these products.

# KNOWING the rates for 2026



# RATES excl. Taxes in pictures



**1** Teddy bear - 0.3 kg - €0.08

**2** Board games - 1.5 kg - €0.22

**3** Wooden game - 10 kg - €1.20

**4** Baby walker - plastic - 5 kg - €1.14



## Rates excl. tax by weight bracket

	> 95% <sup>(1)</sup> MONO-MATERIAL		> 50% <sup>(2)</sup> MAIN MATERIAL				NO MAIN MATERIAL
	Metal	95% certified paperboard, wood, PP <sup>(3)</sup> , PE <sup>(4)</sup> and mixed PP <sup>(3)</sup> and PE <sup>(4)</sup>	Metal	95% certified paperboard, wood, PP <sup>(3)</sup> , PE <sup>(4)</sup> and mixed PP <sup>(3)</sup> and PE <sup>(4)</sup>	Other plastics	Other materials	
< 0.1 kg	€0.01	€0.01	€0.01	€0.01	€0.02	€0.02	€0.02
≥ 0.1 kg and < 0.2 kg	€0.02	€0.03	€0.03	€0.03	€0.04	€0.05	€0.05
≥ 0.2 kg and < 0.3 kg	€0.03	€0.04	€0.04	€0.05	€0.07	€0.08	€0.08
≥ 0.3 kg and < 0.4 kg	€0.04	€0.06	€0.06	€0.07	€0.09	€0.11	€0.11
≥ 0.4 kg and < 0.5 kg	€0.05	€0.07	€0.07	€0.08	€0.12	€0.14	€0.14
≥ 0.5 kg and < 1 kg	€0.08	€0.11	€0.11	€0.14	€0.19	€0.24	€0.24
≥ 1 kg and < 2 kg	€0.15	€0.22	€0.22	€0.27	€0.38	€0.47	€0.47
≥ 2 kg and < 3 kg	€0.25	€0.37	€0.37	€0.44	€0.63	€0.78	€0.78
≥ 3 kg and < 5 kg	€0.26	€0.39	€0.44	€0.53	€0.76	€0.93	€0.93
≥ 5 kg and < 7 kg	€0.39	€0.58	€0.66	€0.79	€1.14	€1.40	€1.40
≥ 7 kg and < 10 kg	€0.48	€0.72	€0.82	€0.98	€1.42	€1.75	€1.75
≥ 10 kg and < 15 kg	€0.80	€1.20	€1.37	€1.64	€2.36	€2.91	€2.91
≥ 15 kg and < 20 kg	€1.12	€1.68	€1.91	€2.29	€3.31	€4.07	€4.07
≥ 20 kg and < 25 kg	€1.15	€1.73	€2.33	€2.80	€4.04	€4.97	€4.97
≥ 25 kg and < 30 kg	€1.27	€1.90	€2.71	€3.25	€4.69	€5.77	€5.77
≥ 30 kg and < 40 kg	€1.45	€2.18	€3.27	€3.92	€5.66	€6.98	€6.98
≥ 40 kg and < 50 kg	€1.68	€2.51	€4.00	€4.79	€6.92	€8.51	€8.51
≥ 50 kg and < 100 kg	€2.51	€3.78	€6.32	€7.58	€10.96	€13.49	€13.49
≥ 100 kg and < 150 kg	€3.19	€4.79	€9.53	€11.44	€16.52	€20.33	€20.33
≥ 150 kg and < 200 kg	€4.47	€6.71	€13.34	€16.01	€23.13	€28.46	€28.46
≥ 200 kg and < 250 kg	€5.75	€8.63	€17.15	€20.59	€29.73	€36.59	€36.59
> 250 kg	€6.39	€9.58	€19.06	€22.87	€33.03	€40.66	€40.66

(1) Over 95% weight by weight. (2) Over 50% of the product's total weight. (3) Polypropylene (PP). (4) Polyethylene (PE).  
Find the materials guide on [ecomaison.com](http://ecomaison.com).

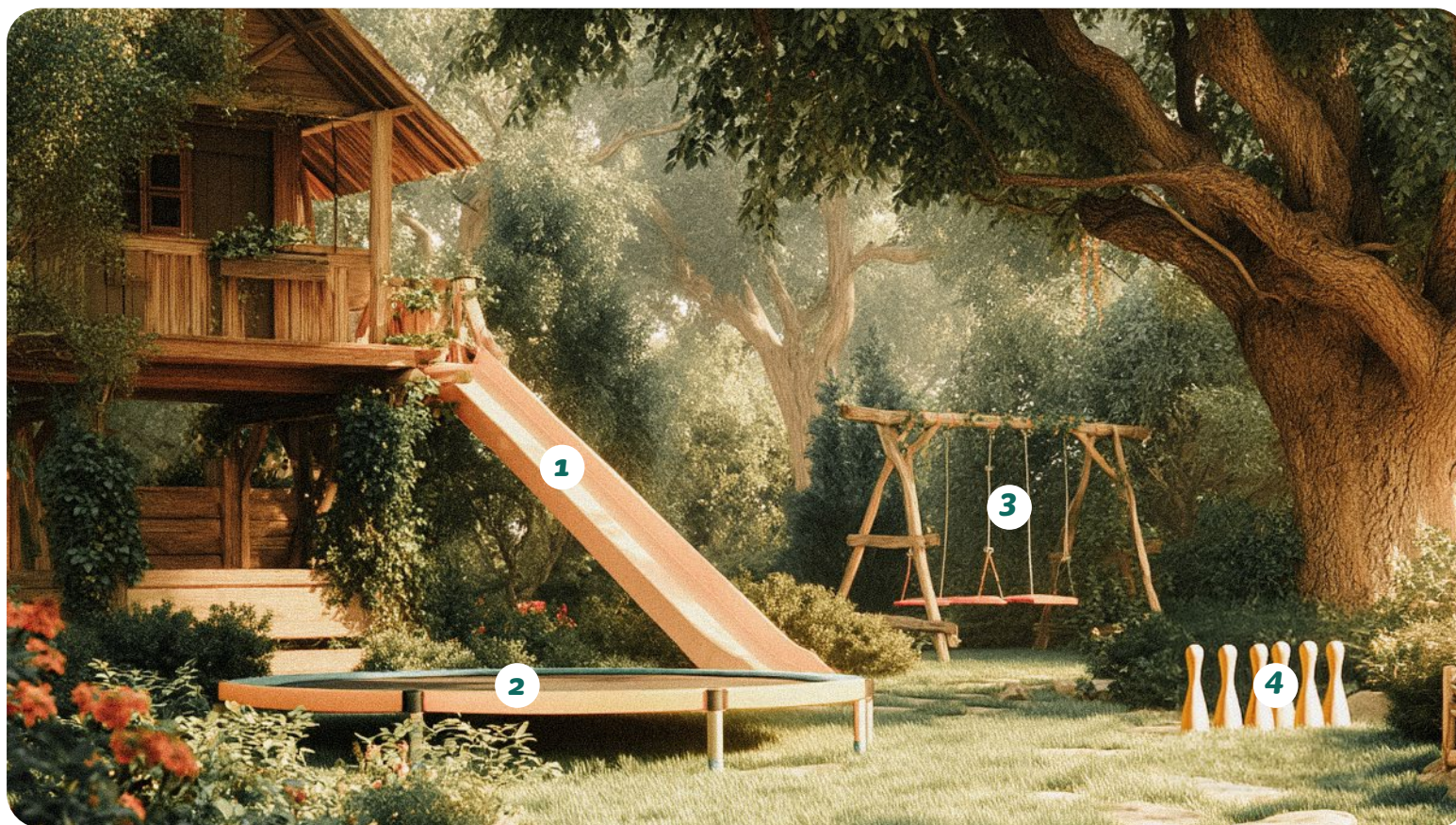


## Rates excl. tax by weight bracket

	> 95% <sup>(1)</sup> MONO-MATERIAL		> 50% <sup>(2)</sup> MAIN MATERIAL	
	Paper, cardboard, wood		Paper, cardboard, wood	
	Without sustainable management	Certified sustainable management	Without sustainable management	Certified sustainable management
< 0.1 kg	€0.02	€0.01	€0.02	€0.01
≥ 0.1 kg and < 0.2 kg	€0.04	€0.03	€0.04	€0.03
≥ 0.2 kg and < 0.3 kg	€0.05	€0.04	€0.06	€0.05
≥ 0.3 kg and < 0.4 kg	€0.08	€0.06	€0.09	€0.07
≥ 0.4 kg and < 0.5 kg	€0.09	€0.07	€0.10	€0.08
≥ 0.5 kg and < 1 kg	€0.15	€0.11	€0.18	€0.14
≥ 1 kg and < 2 kg	€0.30	€0.22	€0.35	€0.27
≥ 2 kg and < 3 kg	€0.50	€0.37	€0.57	€0.44
≥ 3 kg and < 5 kg	€0.59	€0.39	€0.73	€0.53
≥ 5 kg and < 7 kg	€0.88	€0.58	€1.09	€0.79
≥ 7 kg and < 10 kg	€1.14	€0.72	€1.41	€0.98
≥ 10 kg and < 15 kg	€1.83	€1.20	€2.26	€1.64
≥ 15 kg and < 20 kg	€2.56	€1.68	€3.16	€2.29
≥ 20 kg and < 25 kg	€2.85	€1.73	€3.92	€2.80
≥ 25 kg and < 30 kg	€3.28	€1.90	€4.62	€3.25
≥ 30 kg and < 40 kg	€3.93	€2.18	€5.67	€3.92
≥ 40 kg and < 50 kg	€4.76	€2.51	7€0.04	€4.79
≥ 50 kg and < 100 kg	7€5.53	€3.78	€11.33	€7.58
≥ 100 kg and < 150 kg	€11.04	€4.79	€17.69	€11.44
≥ 150 kg and < 200 kg	€15.46	€6.71	€24.76	€16.01
≥ 200 kg and < 250 kg	€19.88	€8.63	€31.84	€20.59
> 250 kg	€24.58	€9.58	€37.87	€22.87

(1) Over 95% weight by weight. (2) Over 50% of the product's total weight. (3) Polypropylene (PP). (4) Polyethylene (PE).  
Find the materials guide on [ecomaison.com](https://ecomaison.com).

# RATES EXCL. TAXES in pictures

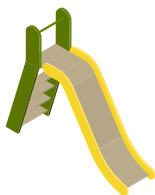


**1 Slide** - 20 to 23 kg - €2.80

**2 Trampoline** - 30 to 38 kg - €3.68

**3 Swing** - 50 to 90 kg - €6.60

**4 Bowling set** - 4 kg - €0.39



## SPECIAL RATES

### Outdoor toys ≥ 20 kg – 160 cm

**Special rates can be applied for products meeting the following criteria:**

- Outdoor toys
- Category: Family toys
- Combination of up to 3 materials
- Weight greater than or equal to 20 kg and size 160 cm or above (L+W)

This special rate is justified in view of the characteristics of these toys, which are automatically disassembled and placed in large-volume containers (e.g. skips).

BRACKETS CONCERNED	COMBINED RATE: COMBINATION OF 3 MATERIALS (€ EXCL. TAX)
20-25 kg	€2.80
25-30 kg	€3.17
30-40 kg	€3.68
40-50 kg	€4.33
50-100 kg	€6.60
100-150 kg	€8.86
150-200 kg	€12.40
200-250 kg	€15.94
≥ 250 kg	€17.72



€7 per pack of 1,000

### Free toys

**Free toys (gifted free of charge) have special codes and an associated rate of €7 per pack of 1,000.**

- Category: Free toys
- Product type: Free toys & accessories
- Type of material: up to you
- Characteristic: Pack of 1,000

In practice, codification will take the following form:  
34220XX0890

# APPENDICES and data sheets

Recycling disruptors

Sustainable management  
criteria

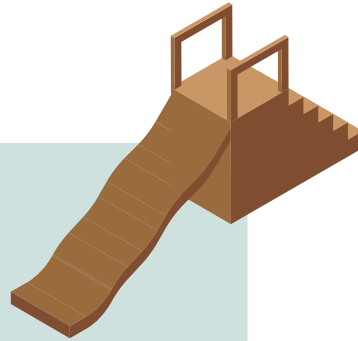
Overview of supporting  
documents



# RECYCLABLE materials

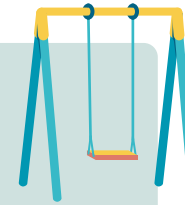
## WOOD AND DERIVATIVES

- >75% certified or uncertified solid wood.
- >50% wood, panels and wood derivatives.
- >95% cardboard.
- >75% plywood.
- >75% mixture of certified solid wood and metal.
- >75% OSB.
- >75% chipboard.
- >75% chipboard and/or wood and/or metal.



## metals

- Metal >50%.
- >50% ferrous metal.
- >50% non-ferrous metal.



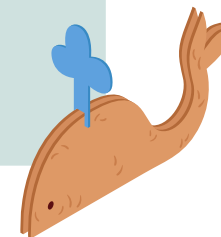
## PLASTICS

- >50% mixture of PE and PP.
- >50% polyethylene (PE).
- >50% polypropylene (PP).
- >50% polyethylene terephthalate (PET).



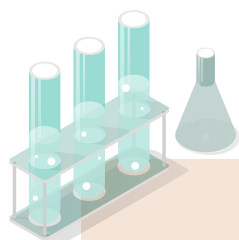
## PAPER, CARDBOARD

- >95% paper.
- >50% paper, cardboard.



# RECYCLING disruptors

These are elements or materials that prevent recycling.  
**There are 2 categories:**

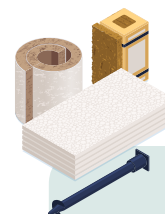


## Chemical disruptors

Hazardous substances within the meaning of the AGEC Act (Art. 13), i.e.:

- Substances of “**very high concern**” within the meaning of the European REACH regulation, in a concentration above 0.1% weight by weight.
- Substances listed under Annex XVII to REACH in **quantities exceeding the established limit**.
- **Substances** subject to **the POPs regulation** (Appendix 4).

[READ MORE](#)



## Physical disruptors

- Materials or assembly methods that **do not allow the extraction of materials** or that **compromise the quality of the flow to be recycled**.



### WE PROVIDE TOOLS:

Discover the list of disruptors to assess the recyclability of your products using the [Ecomaison tool](#).

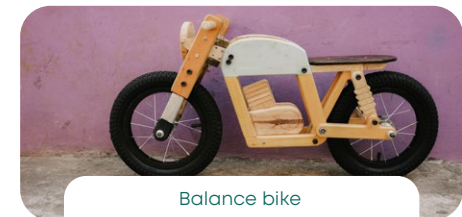


# DISRUPTORS to the recycling of Games & Toys



RECYCLING DISRUPTOR	FACTORS THAT DISRUPT RECYCLABILITY (Wood and derivatives, metals, foam, spring and latex, paper, cardboard, plastics)
<p><b>Disruptive chemicals (SVHCs)*</b></p>	<p>Brominated flame retardants (PBDE, HBCD), adhesives containing solvents or epoxy resins, chemical surface treatments... <b>in all toy product families.</b></p>
<p><b>Integrated electrical/ electronic components that are difficult to separate using standard user tools</b></p>	<p>LEDs, motors or sensors integrated into the toys whose <b>main material is recyclable.</b> Examples: battery-operated plastic construction sets, imitation kitchens with separable EEE, balance bike with separable EEE.</p>
<p><b>Included inert mineral materials that are difficult to separate using standard user tools</b></p>	<p><b>Inert and mineral elements incorporated into games and toys whose main material is recyclable.</b> Examples: Activities and creative hobbies with mineral parts such as marbles made of glass, natural or synthetic sand, plaster.</p>

## NON-EXHAUSTIVE PRODUCT EXAMPLES



\*SVHC (Substance of Very High Concern) within the meaning of the European REACH regulation.

# DISRUPTORS to the recycling of Games & Toys

## RECYCLING DISRUPTOR

**FACTORS THAT DISRUPT RECYCLABILITY**  
(Wood and derivatives, metals, foam, spring and latex, paper, cardboard, plastics)

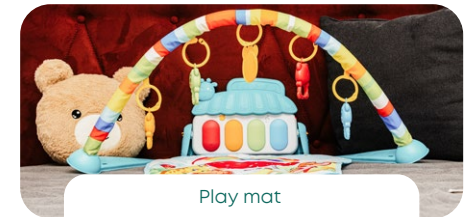
## NON-EXHAUSTIVE PRODUCT EXAMPLES



Sector  
dependent

**Foams or textiles incorporated  
into the structure in a complex  
way**

Complex chemical or mechanical incorporation of foams and textiles into toys items whose main material is recyclable.  
Examples: rocking horse with cushion, early learning toys (play mat with stitched squeaker or rattle).



Play mat

**Complex polymers (cross-  
linked, woven, reinforced,  
composite)**

Polymers: cross-linked, woven or reinforced to impart specific properties to the products.  
Examples: doll's tea sets, slides.



Doll's tea set



Product  
dependent

**Presence of wood in non-wood  
flow**

Complex incorporation of wood, cardboard or wood derivatives combined with plastic resins, difficult to separate at end of life.  
Example: educational kit in which plastic and cardboard are closely intertwined.



Educational game

# STATEMENT OF PRESENCE of hazardous substances

The obligation to display information on the presence of a hazardous substance applies when it is present in concentrations above 0.1% weight by weight in a substance, mixture or item, within the meaning of points 1, 2 and 3 of Article 3 of Regulation (EC) No. 1907/2006 known as REACH, as supplemented and updated by order of the Minister for the Environment.

Information on hazardous substances  
**can be displayed via:**

- The product sheet.
- The Scan4Chem application.  
This app is financed by the European Commission as part of the LIFE programme, in which France is actively involved through the French National Institute for Industrial Environment and Risks (INERIS).

The statement to be  
displayed is as follows:

**CONTAINS A HAZARDOUS SUBSTANCE**

**OR**

**CONTAINS A SUBSTANCE  
OF VERY HIGH CONCERN**

The statement is supplemented by the name  
of each hazardous substance present.

# Renewable Resources sustainable management criterion

## SUSTAINABLE MANAGEMENT - WOOD (WOOD-BASED PANELS (PP, OSB) OR PAPERBOARD)

The “Sustainable Management - Wood” rate is applicable in accordance with the following conditions:



### Sustainable management - wood or paperboard products

Minimum “Sustainable Management” wood content in the product:

Toys: **50%**

#### Material

“Sustainable management” wood, i.e. derived from sustainably managed resources and certified:

- PEFC, PEFC recycled, FSC Mix, FSC recycled;
- or under any equivalent due diligence system


## Labels & Certification



or equivalent

These labels and certifications are accepted to indicate the resource’s sustainable management.

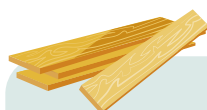
# OVERVIEW OF SUPPORTING DOCUMENTS for eco-modulations

	 <p><b>ECO-MODULATION</b></p> <ul style="list-style-type: none"> <li>• Recyclability</li> <li>• Sustainable renewable resource management</li> <li>• Extension of useful life</li> </ul>
<b>APPLICATION RULES</b>	<p><b>Upon declaration→</b> Rates via the different codes</p>
<b>SUPPORTING DOCUMENTS</b>	<ul style="list-style-type: none"> <li>- Sustainable renewable resource management</li> <li>- Sworn statement to be completed in the “Services” space</li> <li>- Supporting documents to keep available in the event of an inspection (by way of example, non-exhaustive list): <b>transaction documents:</b> <b>purchase invoices and/or delivery notes, recognised certificates and/or transaction certificates, detailed product data sheets (including composition details)</b></li> </ul>
	<ul style="list-style-type: none"> <li>- Recyclability</li> <li>- Use of the “Recyclability” tool</li> <li>- Supporting documents</li> </ul>
	<ul style="list-style-type: none"> <li>- Extension of useful life</li> <li>- Schedule of declaration to be completed in the “Services” space <b>and</b></li> <li>- Supporting documents to be uploaded to the “Services” space</li> </ul>

# eco-MODULATION supporting documents

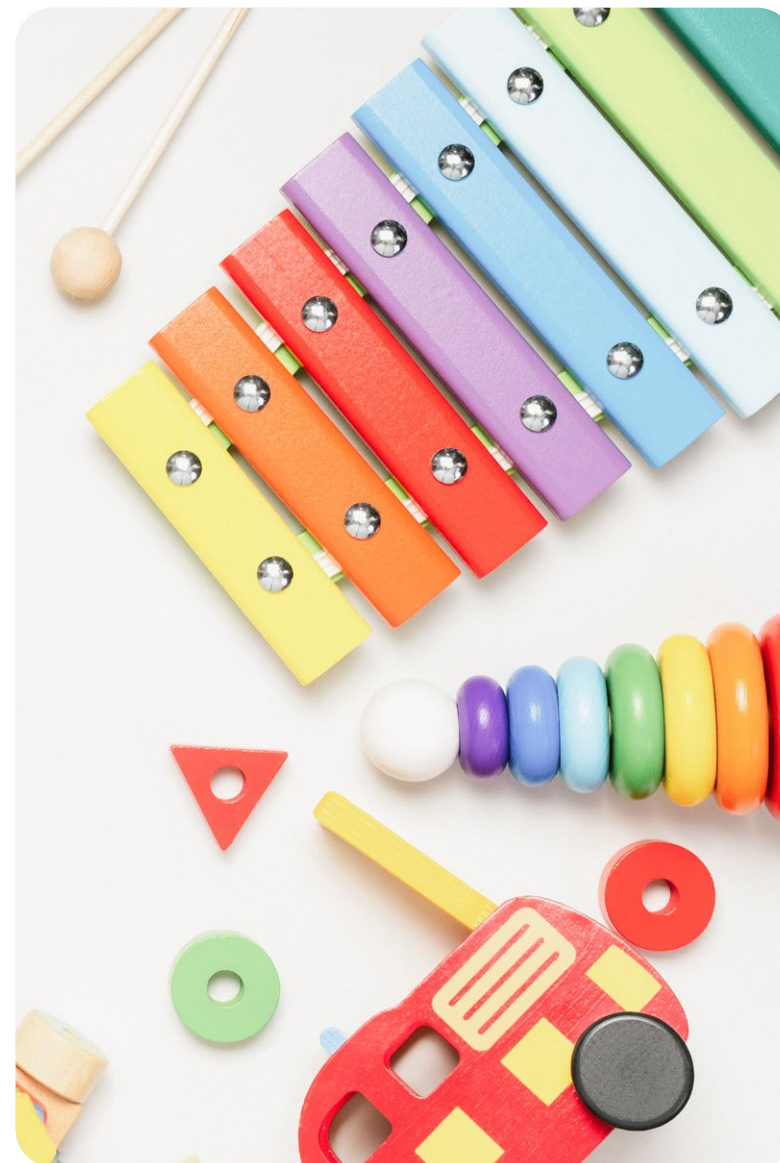
## SUSTAINABLE RENEWABLE RESOURCE MANAGEMENT

Supporting documents will vary depending on the material. You must then **complete a sworn statement in the Ecomaison “Services” space** concerning the possession of the supporting documents listed below.



### Wood

- **Product labels and certifications**, according to the principles of the control chain for the labels and certifications concerned: PEFC, PEFC Recycled, FSC Mix or FSC Recycled.
- Or **any equivalent due diligence system** ensuring that the products come from sustainably managed forests and recycled and/or controlled sources.



# eco-MODULATION supporting documents

## RECYCLABILITY

Documents do not need to be uploaded to the Ecomaison “Services” space.

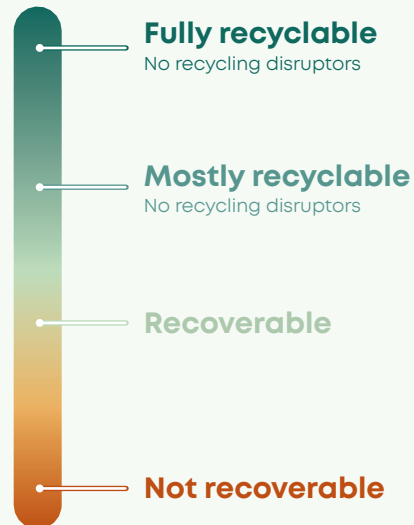
The supporting documents are available in the event of an inspection by Ecomaison:

› **Product sheets** stating the full composition of the product with the amounts of any hazardous materials and substances.

› **Results available in the [Ecomaison tool](#)** for recyclability analysis.



## 4 recyclability levels



# OVERVIEW OF SUPPORTING DOCUMENTS for eco-modulations

<p><b>APPLICATION RULES</b></p>	<p><b>Upon declaration</b> → Rates via the different codes</p>
<p><b>SUPPORTING DOCUMENTS</b></p>	<p><b>Sustainable renewable resource management</b> Sworn statement to be completed in the “Services” space Supporting documents to keep available in the event of an inspection (by way of example, non-exhaustive list): transaction documents: purchase invoices and/or delivery notes, recognised certificates and/or transaction certificates, detailed product data sheets (including composition details)</p> <p><b>Recyclability</b> Use of the “Recyclability” tool Supporting documents</p> <p><b>Extension of useful life</b> Schedule of declaration to be completed in the “Services” spaces <b>and</b> Supporting documents to be uploaded to the “Services” space</p>




# eco-MODULATION supporting documents

## EXTENSION OF USEFUL LIFE

	Provision of spare parts
<p><b>DECLARATION APPENDIX:</b> Available in the "Services" space Information to be filled out</p>	<ul style="list-style-type: none"> <li>• Product references and Ecomaison codes</li> <li>• Provision date</li> <li>• Date of end of commercialisation (presumed, by default, to be 31 December N+2 for toys)</li> </ul>
<p><b>SUPPORTING DOCUMENTS:</b> To be uploaded to the "Services" space</p>	<ul style="list-style-type: none"> <li>• Supporting document providing proof of spare part availability, such as: BOM – Bill of Materials/parts list and/or exploded-view drawing and/or instruction manual</li> </ul>



# OVERVIEW OF SUPPORTING DOCUMENTS FOR the IRM bonus

	 <p><b>BONUS</b> · IRM</p>
<b>APPLICATION RULES</b>	<p><b>Upon declaration</b> → Specific calculation and payment of a certain amount</p>
<b>SUPPORTING DOCUMENTS</b>	<p><b>Documents to be forwarded</b></p> <p>→ For manufacturers:</p> <ul style="list-style-type: none"> <li>- specific certification of the recycled materials supplier (see Ecomaison list)</li> <li>- or certificate from the recycled material supplier</li> <li>- failing this, a certification obtained from a COFRAC-accredited certifying body</li> </ul> <p>→ For distributors and importers:</p> <ul style="list-style-type: none"> <li>- specific certification of the manufacturers supplying the products (see Ecomaison list)</li> <li>- failing this, a certification obtained from a COFRAC-accredited certifying body</li> </ul> <p>The certifications or attestations must specify:</p> <ul style="list-style-type: none"> <li>- the origin of the eligible recycled material incorporated into the material or product</li> <li>- the content of this recycled material in the material (available for example:             <ul style="list-style-type: none"> <li>- for wood, in the FSC Recycled or FSC Mix certificates or any equivalent system;</li> <li>- for plastic, in the provisions of the NF EN 15343 standard).</li> </ul> </li> </ul>



\*NB: at the date of publication of this guide, the work on the material control and traceability chain carried out at the level of the OCABJ (coordinating body of the furnishings, DIY and garden waste sector) was still underway.



ecomaison

**For any questions,  
please CONTACT US AT:**

[contact@ecomaison.com](mailto:contact@ecomaison.com)

Follow our news and events on  
**[ecomaison.com/en](https://ecomaison.com/en)**  
and on our **LinkedIn page**



Ecomaison – SAS with share capital of €291,000 - Registered office: 50 avenue Daumesnil, 75012 Paris - 538 495 870 RCS Paris  
Photo credits: Shutterstock - Layout: makassar - September 2025